

November 2023

# Box River News

Boxford • Edwardstone • Groton • Little Waldingfield • Newton Green



Delivered free to every home in Boxford, Edwardstone, Groton, Little Waldingfield, Newton Green, Bower House Tye, Milden & White Street Green and available to residents in Acton, Assington, Brent Eleigh, Great Waldingfield, Hadleigh, Kersey, Lavenham, Leavenheath, Nayland, Polstead, Shelley, Semer, Stoke-by-Nayland, Sudbury and parents of children at Boxford School.





**sunflowers  
Childcare**

**An independent setting  
within Boxford Primary school**

**We offer term wrap-around care and  
Early Education for children aged  
20 months -12 years of age**

**Term time opening hours:**  
 Monday – Thursday: 7.30am – 6.00pm  
 Friday: 7.30am – 5.00pm  
 Set Pre-school sessions from 9.00am – 3.30pm

For school aged children, we deliver to Boxford school from  
Breakfast club and collect directly from the school.

**School Holiday clubs for children 20m – 12 years:**  
 (pre-school children need to be in attendance at Sunflowers)  
 Monday - Thursday: 8.30am – 3.30pm

**15 and 30 hours Early years  
government entitlement sessions available**

The Cabin, Stonestreet Road, Boxford, Suffolk. CO10 5NP

**CALL US: 01787 211363**

Email: [info@sunflowers-childcare.co.uk](mailto:info@sunflowers-childcare.co.uk)  
 Web: [www.sunflowers-childcare.co.uk](http://www.sunflowers-childcare.co.uk)




**WILL BISHOP  
JEWELLERY**

Beautiful jewellery handmade from  
silver, gold and platinum  
Bespoke service available

Please call 01787 210251 to make an appointment  
 info@willbishop.co.uk www.willbishop.co.uk

## TRAILER SALES AND HIRE

We are a family run company that will always go the extra mile for our customers.

We provide all types of trailers to both companies and individuals. We are based in Suffolk but we cover all of East Anglia, Kent, Surrey and into London.

Approved dealer for Bateson, Maypole, Tickner & Woodford Trailers.

Contact either Rob or Jeanette to discuss your requirements so we can get your perfect trailer.



**07850 554 776 / 07974 189 647**  
**rob@1stoptrailers.co.uk**  
**[www.1stoptrailers.co.uk](http://www.1stoptrailers.co.uk)**



Open Every Day 07:00 - 21:00hrs including Bank Holidays

**ELAINE EVERITT**  
 BSc(Hons) DO LicAc MGOsC MBMAS MNIMH MCPP

**OSTEOPATHY • CRANIAL OSTEOPATHY  
ACUPUNCTURE • HERBAL MEDICINE**

Treating newborns to elderly  
 Sports injuries, headaches, neck & back pain  
 Recognised by most medical insurances

*For a conversation to find out more or  
to book an appointment call*  
**07587 743 850**  
[www.elaineveritt.com](http://www.elaineveritt.com) / [www.pippettes.co.uk](http://www.pippettes.co.uk)

**Pippettes Farm  
Stone Street, Boxford CO10 5NR**



**SUFFOLK  
STORAGE  
SOLUTIONS**

- Storage and Industrial Units
  - Individual Yards
- 20 & 40 foot insulated containers
- Motorhome and Caravan Storage

Short and long term lets available.

**For all your storage needs.**

[office@suffolkstoragesolutions.co.uk](mailto:office@suffolkstoragesolutions.co.uk)  
 07880 555 245



**BOXFORD BOUNTY**  
THE VILLAGE LOTTERY  
**RELAUNCH**

JOIN NOW! **£20 PER YEAR**

**DRAWS EVERY 2 MONTHS  
3 CASH PRIZES PER DRAW**

TO REGISTER ONLINE VISIT  
<https://boxford.me.uk/boxford-bounty>  
or scan this QR code:

All profits assist Boxford Community Council in providing funding for projects, events and facilities for organisations & clubs in Boxford, Edwardstone and Groton.

**BOXFORD COMMUNITY COUNCIL**  
Supporting the community in Boxford, Edwardstone and Groton

[www.boxford.me.uk](http://www.boxford.me.uk)  
[boxfordcommunitycouncil@gmail.com](mailto:boxfordcommunitycouncil@gmail.com)

Charity No.: 304862

## BOXFORD BOUNTY RELAUNCH

The Boxford Bounty is the local lottery for Boxford, Edwardstone and Groton. The money collected is split into roughly two halves with one half used to support local groups and projects and the other split into prizes for regular draws throughout the year.

Originally the scheme was known as 'Little ERNIE' after the name of the machine used to draw tickets for the National Premium Bond Scheme (ERNIE being an acronym of Electronic Random Number Indicating Equipment).

Each collector collected a shilling a week from their friends and neighbours. The earliest records I have are from 1974 and show collections of 5p a week. They were given to me by Joan Cooper who at the time was living in Ash Street. She was a petite strong-minded elderly woman who had no qualms of 'playing the old lady card'. Anyone moving into the area was welcomed by Joan, and then she would open with the left jab of explaining the importance of community with a big 'C', followed swiftly with the right hook of asking them how many tickets they would like! She was seldom refused. I remember someone years later recalling Joan, who said, "Well, the way she put it, membership of The Boxford Bounty was practically compulsory."

Many of the names in this early record are still members of the Boxford Bounty today. Sadly, some of them are no longer with us and I wonder if the name as it appears in the book is of the person I know now, or the previous generation, or perhaps the one before that? There are some well-known Boxford surnames: Bevan, Yallop, Skinner, Lawson, Mattock, Rule, Kingsbury, Howard, Tugman - the list goes on.

Over the years the price has necessarily increased and the method of collection has changed. In 1979 the collection was changed to monthly with a price of 20p per month (25p if the month had 5 weeks). In 1990 the price went up to 50p per month

and by this time some members are paying annually by cheque. By 1997 nearly all collection is annually and has become £10 a year, although there are still quite a few paying £1 a month (which persisted until 2005 when I eventually persuaded the remaining 4 people still on monthly collection to pay annually).

We are now re-launching the Boxford Bounty. The price has gone up to £20 per year, the first price increase in the 26 years since 1997!

The Boxford Bounty still relies on local collectors although advances in technology allow us to register members and receive payment online, which we are starting to do. I am not sure what Joan Cooper would have made of it - I don't think she was particularly technically savvy. But, she would have asked if you have a mobile phone and if you said "yes", she would have pushed a QR code under your nose and explained the meaning of Community!



Mark Miller

Boxford Bounty co-ordinator  
Boxford Community Council

## BOXFORD CHRISTMAS CARD

This is the new 2023 Boxford Christmas card which is priced £4.50 for a pack of 10. This year the profits from the sale of each pack will be donated to 'Boxford Friendship Group'. Now on sale in Boxford Post Office.

Queen Bee Designs



## Box River News

Trudi Wild, Twin View, 18 Stone Street, Boxford CO10 5NR

Telephone: 01787 210946

email: [editor@boxrivernews.com](mailto:editor@boxrivernews.com)

[www.facebook.com/BoxRiverNews](https://www.facebook.com/BoxRiverNews)

[www.instagram.com/boxrivernews](https://www.instagram.com/boxrivernews)

Deadline date for the December 2023 Issue is:

**November 15<sup>th</sup> at midday**

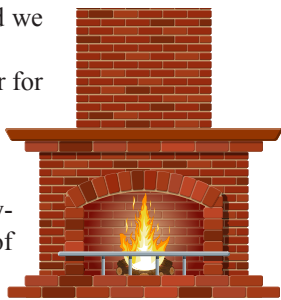


## NEWTON FIRESIDE CLUB

The new session is well under way and we have had some fabulous events.

We were blessed with perfect weather for our boat trip down the Stour to The Henny Swan for lunch.

19 members clambered aboard 2 boats for an hour's cruise. The countryside was beautiful and we saw lots of



swans and other birds - even a kingfisher. Lunch at The Swan was enjoyed by all. We then met on the edge of the river for a group photo, before embarking for the journey home.



Unfortunately, Katie was unwell and we have had to reschedule her drumming session, so on the 26<sup>th</sup> September, with bigger, brighter and bouncier balls, the Club held an inaugural session with our new bingo set. Some members were very lucky winning both lines and cards while others struggled to get off the mark. We were kept in check by our caller Alan who, should he wish, be able to get a job as a caller down on the Great Yarmouth seafront! Afterwards we all enjoyed refreshments along with homemade cakes.

On a sunny October autumnal afternoon 18 members of the Fireside Club enjoyed a round of crazy golf at Suffolk Adventure Golf followed by tea and cake. The holes depicted different aspects of Suffolk with various mechanical models and animals adding to the interesting information at each tee. There was much laughter and groans of frustration as the balls were hit around the 18 hole course, with even a few 'hole in ones' - whether this was skill or luck was a continued topic of debate with our refreshments.

Please come along and join us in Newton Village Hall every Tuesday fortnight for a varied timetable of activities

### Autumn 2023 Programme of Events:

- Tues 7<sup>th</sup> Nov Talk by Sue Tibbetts
- Tues 21<sup>st</sup> Nov Famous Places Quiz
- Tues 5<sup>th</sup> Dec CAB Christmas Music
- Fri 15<sup>th</sup> Dec Xmas Lunch 12 for 12:30 at The Saracens Head
- Tues 19<sup>th</sup> Dec Christmas Flowers Workshop

All meetings are held in the Village Hall and start at 2pm unless otherwise stated. Anyone is welcome. Subs for members are £25 this term and must be paid in advance. This includes refreshments, activities and subsidised events. Non-members are welcome to come along to any session. The fee will be between £5 and £10 depending on the activity. New members are always welcome, the first session is free.

Please contact Moira on **01787 374652** or Sue on **07881 383 998** if you would like more details.

*Sue Presland*

## GROTON PEOPLE & PLACES PLAN UPDATE

We had an excellent Steering Group meeting on 12<sup>th</sup> October after the summer recess. We were joined by David Clarke and Jo Wood from the Babergh Pilot Project Team. They kindly provided the hardcopy Housing Assessment Survey forms that should have been delivered to Groton residents' households over the last couple of weeks. Additionally we agreed the next steps across our Groton People & Places Plan pilot project, ensuring we are in sync. The Babergh team have drafted populated the first sections of the Groton People & Places Plan document, with data sourced by us, to illustrate the style that they would like to roll out to other parishes in their pilot, using our data.

Our focus over the coming months will be to develop the following priority modules of our plan: Groton Housing & Development Plan, Groton Climate Change Plan, Groton Community Plan, Groton Services Plan. Through virtue of it being a pilot project we have the exciting luxury of being able to develop 'clean sheet of paper' plans for these modules. We will start at a high level with focus areas and objectives for each module, gather new data, utilise existing data and develop draft policies/actions which will be tested with the Groton community as we progress. This will probably take the form of a mix of engagement options ranging from specific module-focused face-to-face meetings to hardcopy or online surveys.

We are very open to all ideas so if anyone is interested in helping the development of any of these modules please can you contact Richard Jones (email: [grotonclerk@yahoo.com](mailto:grotonclerk@yahoo.com)). We would really appreciate your enthusiasm and help.

We have been updating the Groton Neighbourhood Plan website with the latest updates and links to project documents e.g. the draft Groton People & Places Plan Document, 2021/22 Housing data analysis, link to the online Housing Assessment Survey Form & Report and others. Check out our website for updates too: <http://grotonnp.onesuffolk.net>

*Groton Neighbourhood Plan Steering Group*

## BOXFORD & GROTON UNITED CHARITIES

*Registered Charity Number: 207861*

The Trustees of Boxford & Groton United Charities will be meeting on the 27<sup>th</sup> November and invite applications for grant aid from residents living in the three parishes of Boxford, Groton and Edwardstone, for educational, medical, and general charitable purposes.

Applications from organisations serving the above area are also invited and should be made in writing to: *Guy Godfray, Clerk to the Trustees, 17 Swan Street, Boxford, Sudbury CO10 5NZ.*

Closing date for applications Friday 24<sup>th</sup> November.

## ALLOTMENTS AVAILABLE IN KERSEY

The Nightingale Trust has 2 allotment plots available for rent - 1 full plot, 1 half plot. Have you ever wanted to grow your own tasty, fresh vegetables, fruit, flowers etc.? Now is your chance. The allotments are situated behind The Bell, within beautiful and peaceful countryside. The rent is £35 for a full plot, £25 for a half plot - cheaper than a gym membership and better for you!! For more information, please contact Natalie Blyth - 01473 827805 - 07487 816966 - [nablyth1@gmail.com](mailto:nablyth1@gmail.com)



# BOXFORD CALENDAR 2024

The St Mary's 2024 Church calendar is now for sale in Boxford Post Office priced at £8.50 or 2 for £16 - so why not buy one for yourself and one for a friend or family member?

All proceeds from the sale of the calendars are donated towards the substantial amounts required to upkeep St Mary's Church.



ST MARY'S CHURCH, BOXFORD - 2024 CALENDAR

## WILDFIRES: EMERGENCY PLANS

You may remember the wildfire on the border between Groton and Edwardstone Parishes in July last year. A stubble field caught fire during the severe drought and it took several fire tenders, assisted by local farmers, several hours to put it out and prevent the fire spreading further. This was not an isolated incident - Suffolk Fire and Rescue Service attended 365 wildfires in June, July and August 2022.

Figures for 2023 are not yet available, but it's likely that the mild summer and lower temperatures will have resulted in fewer such incidents this year. But scientists are forecasting more extreme weather as a result of climate change and hot summers with their attendant risks are likely to become much more frequent.

In view of this, Boxford, Edwardstone, Groton, Little Waldingfield and Great Waldingfield Parish Councils have decided to work together with Suffolk County Council to produce Community Emergency Plans, so that they're prepared for wildfires - and any other local emergency that might happen in the future. The Emergency Services will of course take the lead in responding to a fire or emergency, but the purpose of the plans is to provide local resources to support them. In particular, the plans will include designated rest centres, which will provide an initial assembly point for any residents who need to be evacuated if their homes are threatened by a wildfire (or other local emergency). Volunteers who assist with the plans will receive training from Suffolk County Council in how to run a rest centre.

A working group, consisting of representatives of the five Parishes, has received an initial briefing from the Suffolk Joint Emergency Planning Unit, and is now working on a draft template plan. This will be used by each parish to draw up its own plan, taking into account the unique characteristics of their local area, as well as on the basis that parishes will support each other in the event of an actual emergency.

If you would like to volunteer to get involved, or if you have comments, or think the group should broaden its remit to include other risks, in addition to wildfires, please email Phil Baker, Chair of Edwardstone Parish Council, on [philbaker@icloud.com](mailto:philbaker@icloud.com).

*Boxford, Edwardstone, Great Waldingfield, Little Waldingfield, & Groton Parish Councils*

... THE ...  
**WHITE HORSE INN**  
... EDWARDSTONE ...

Open 5 days a week  
Wednesday - Sunday from 12pm

Wide selection of drinks from independent UK producers  
Craft beers, real ales, ciders, wines & spirits.  
On-site microbrewery - Little Earth Project  
Takeaway draught & bottle list

**Autumn Cider Festival**  
October 20th-29th  
A celebration of cider - both still & sparkling!

**Acoustic Jam Night**  
Wednesday, November 8 from 6:30pm  
Join in or sit back & enjoy with a pint

**Sourdough Pizzas & Boards & Bites**  
Pizzas: Serving Fri & Sat 12-8, Sun 12-4  
Boards: Wed-Sun 12-8, Sun 12-4

**Food Truck Pop Ups**  
Occasional Fridays or Saturdays  
Please check our socials for updates!

**Autumn Shut Down**  
We will be closed for 2 weeks for a much deserved break!  
November 13th-28th inclusive

**Self Catering Cottages & Camping**  
Book via our website!  
Available to book up to March 2024!

[www.edwardstonewhitehorse.co.uk](http://www.edwardstonewhitehorse.co.uk)  
01787 211 211  
f i o t @edwardstonewh

## LITTLE WALDINGFIELD CHARITIES

Today's village charity was created in 1968 as a consolidation of four charities operating in the village which were formally established in 1869.

The predominant charity was simply called John Wincoll, a name we still use today. A plaque commemorating his bequest of land in 1560 for the benefit of the poor is displayed in the church. Other parcels of land followed as far away as Washbrook and Felsham. A copy of the original map showing the Charities' holdings in 1827 is on display in the Parish Room. It's noticed that we now only own 3 packets of land within the village which, for the time being at least, we aim to keep for historical reasons.


Our constitution enables us to make annual donations to the elderly and further financial help for other causes within the village, examples of which could be help for hospital visits, specialist equipment for the infirm or disabled where help isn't available elsewhere, also assistance with the paraphernalia required for the young of our village when embarking on vocational training or university.

All requests for assistance are considered. All our donations and assistance are in strict confidence and we do not means test.

Qualification for our annual Christmas donations to the elderly are as follows:

- Over state pension age, currently 66.
- Permanent residence within the village.
- A resident for at least one year.
- Not in full time employment.

For financial assistance or to join our Christmas list please contact our clerk, Mary Thorogood **247658**



**Elaine Carpenter**  
N.R.H.P., C.H.P., Dip Psychology

## HYPNOTHERAPY

Negative emotions such as anxiety and depression can overwhelm us by rippling out and affecting our whole lives. Hypnotherapy can help you discover how to use the power of your mind to free yourself from fear and gain control back of your life.

I have over 30 years of experience as a hypnotherapist, helping people to overcome a wide range of emotional, mental & physical problems.

Call me for an informal chat to see how Hypnotherapy can help you.

Now available at KERSEY MILL & BOXFORD

**Phone: 01787 210 601**  
**Mobile: 07929 744 072**

MEMORIALS

## LUXSTONE

WE HAND CARVE  
ANYTHING IN STONE

Memorials, standard and bespoke  
Carving - Stone Signs - Nameplates  
Letter Cutting and Carving Courses

Stour Valley Business Centre, Brundon Lane,  
Sudbury, Suffolk CO10 7GB  
Tel 01787 371570 E mail info@neilluxton.co.uk  
www.neilluxton.co.uk



**Chimney Matters**  
Town and Country



**Professional Chimney Sweeping**

- Open fires, Wood burners swept and serviced for maximum efficiency.
- Sweeping and Installation Certificates issued.
- Cows & Bird Guards fitted.
- Fully Insured.

**Mobile : 07767 864127**  
**Phone: 01284 789663**  
**www.chimneymatters.co.uk**

## EDWARDSTONE NP CONSULTATION & EXHIBITION

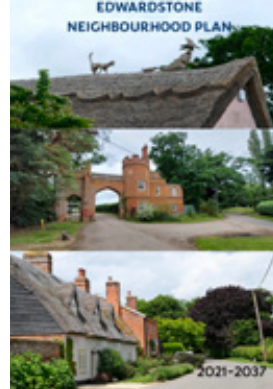
As you may have read in October's BRN, the Edwardstone Neighbourhood Plan Steering Group has been hard at work finalising the draft Neighbourhood Plan.

We are now ready to launch our formal consultation on the policies that will affect Edwardstone from now until 2037. The consultation will start on **30 October** and **last until 11 December**.

The Plan covers issues of Housing, Environment, Landscape and Access & the Community

To help you understand the plan, and the policies in it, there will be an **exhibition in the Edwardstone Parish Hall on Monday 6 November from 1pm until 8pm**.

We want everyone in Edwardstone to get involved in providing comments on the draft plan that affects your parish and very much hope you can make it to the exhibition.



Whether or not you can get to the exhibition, details on where you can get a copy of the draft plan and how to respond to the ideas and policies in it will be delivered to your home so please keep an eye out for our leaflet.

Following the consultation the steering group will look at the comments received before producing a final version of the plan. This will be passed to Babergh Council who will hold a referendum in 2024 for Edwardstone residents to vote on whether or not they want the plan to be adopted as part of the planning process.

## BOXFORD SCOUTS & GUIDES

Boxford is very lucky to have some of the most incredible facilities available in the entire county for the various sections of the Scout Association. For reference, please find the meeting times and contact details for the leaders of each section below.

### MONDAY

RAINBOWS	16:30-17:30	Janice McMillan 01787 210565
GUIDES	<i>not currently active</i>	Bethany Ireland 07464 321337

### TUESDAY

CUBS	18:30-20:00	Jo Colclough 07798 765419
EXPLORERS	18:30-20:30	Neil Barkham 07734 108257

### WEDNESDAY

BEAVERS	<i>not currently active</i>	
BROWNIES	18:00-19:30	Janice McMillan 01787 210565

### FRIDAY

SCOUTS	18:00-20:30	David Talbot-Clarke 07946 550519
--------	-------------	-------------------------------------

**GROUP SCOUT LEADER** Diana Taylor: 01787 210239  
**SPINNEY ENQUIRIES** Mark Miller: 01787 211596



## WORKING FOR BOXFORD

Back in the September edition of the BRN I outlined the way in which Boxford Parish Council had organised itself into 'Working Sub-Committees' to enable it to better move forward on projects identified as being important to Boxford. I am pleased to report that all committees are beginning to 'fire on all cylinders' - ably supported by our parish clerk and volunteers who have joined our working groups to lend support and expertise - I am most grateful.

### Current Key Projects:

#### The 91 Bus Service

Thank you to those who completed the bus survey (in excess of 200) which closed at the end of September. David Burden is collating the results which will be known by the end of October. We shall use the feedback from the survey to assess the options available to us for a continuing Saturday bus service with the support of our district and county councils - the Government has made monies available for enhancing rural transport services (levelling up and all that jazz) - we need to ensure that parishes like Boxford derive some benefit from this process; we need direct engagement with the authorities. May I make it clear that the 91 bus service, Monday to Friday, is NOT at risk at this present time - it is the Saturday service that we are fighting for.

#### Traffic/Speed Surveys

The traffic/speed surveys have been completed on all roads leading to the centre of the village. We are awaiting the release of that information to us by the county council - once received the working group can consider the options for improving the safety for all within Boxford.

#### Village Hall

The Parish Council is continuing to work alongside the Village Hall Committee to support them in their endeavours to improve/upgrade this key community asset - a most interesting and challenging project.

#### Churchyard and Cemetery

Work continues to improve the churchyard and cemetery environs and to establish a long term strategy/plan for the future. Some immediate work has taken place and more is to follow. The churchyard wall fronting Church Street is to be repaired - this is in the planning stage.

#### Public Realm

A recent meeting with the Sudbury warden team has identified areas of work within the village that can be undertaken by them in addition to their present duties. The objective is to gradually undertake further works that will assist in enhancing the tidiness/appearance of the village. Over the next three months we should be seeing signs of that improvement. In this working group we are grateful to the support being given by Kevin Couling.

#### General

In the background we are seeking to achieve improved direct contact with both district and county council executives in an attempt to achieving improved service delivery in some quarters.

And finally, but not least - a further plea. Boxford Community Council and The Playing Field Management Committee are both in need of some secretarial support - an average of 2/3 hours per month. Is there anyone out there who would volunteer to help please let me know. These organisations cannot continue to deliver ongoing services forever without some support.

As always, your feedback on any matter is important to us - thank you for taking the time to read this message.

Colin Parr

Chairman, Boxford Parish Council

## ACTION AGAINST SPEEDING

A current hot topic in Little Waldingfield Parish Council meetings is that of motorists speeding through the village. National politics aside, it is widely acknowledged that we have an issue with vehicles speeding through Little Waldingfield generally and in particular at Haymarket which as no pavements and where there have been 8 speeding-related accidents in the past 6 years.

Data gathered from speed indicator devices (SIDs) shows that upwards of 1 in 8 vehicles exceed 35 mph through the village.

Over the past 18 months, the Little Waldingfield Parish Council has been examining various traffic calming options that would help reduce vehicle speed. There are two major constraints to any scheme: (i) the main road through the village is designated a 'B' road; (ii) it has a number of blind bends which means the necessary sight-line distances cannot be achieved. These constraints are likely to preclude any form of speed humps or 'pinch points' (width restrictions with priority direction signs). Not to mention the large cost and environmental impacts (noise/pollution etc) such schemes can incur.

Gates placed either side of the road at the entrance to villages are a proven psychological method of reducing speed, albeit temporarily. Another proven deterrent is speed indicator devices, particularly those with text, or faces in addition to a speed readout.

In 2017, Little Waldingfield entered into a shared agreement with Acton and Great Waldingfield to purchase three SIDs which would be circulated every two weeks around the three villages. The devices now only work for around 65% of the time, and can no longer provide any speed data without paying for costly repairs. In addition, Great Waldingfield has recently decided to purchase its own dedicated SIDs.

Little Waldingfield Parish Council is therefore considering repairing/replacing the existing village gates and purchasing our own SIDs, however, this will involve some expense. Having our own dedicated devices means they could be permanently installed, rather than being used on the current 2 weeks on, 4 weeks off rota, and they could be moved around various locations within the village. The SIDs can also provide data which can be used for traffic enforcement and as evidence in support of a reduction in the speed limit if called for.

In light of the cost of around £3500 per device, we wish to seek the views of parishioners before making any decisions. Happily, our local district and county councillors have indicated that some financial support is also likely to be provided by them. There will be an open forum at the next parish council meeting on the 9 November 2023, and you can also express your opinions via email to the Acting Clerk, Chris White ([clerk.littlewalingfieldpc@hotmail.co.uk](mailto:clerk.littlewalingfieldpc@hotmail.co.uk)).

We look forward to hearing your views.



**Moving?**

Call us on **01787 377489**

**Todds Removals**  
A Todd Storage  
a reliable local service you can trust

- Removals
- Storage
- Home or Business
- Packing materials
- Packing service
- UK, Europe and beyond

MEMO NO. 1027

[www.todds-removals.co.uk](http://www.todds-removals.co.uk)

# MATTOCK MOTORS LTD

CALAIS STREET FARM, CALAIS STREET, BOXFORD



- TYRES
- BRAKES
- EXHAUSTS
- SERVICING
- MOT TESTS
- ONE STOP CAR REPAIRS

**Has your Car lost it's Spark of Life?**

**Full Diagnostic Equipment, Laser Liner, Fault Code Reading Equipment.**  
(A.B.S., Airbag, Engine Management Lights etc)

- AIR CONDITIONING • REGASSING
- REPAIRS • ULTRA VIOLET LEAK DETECTION

OPENING TIMES MON-FRI 8:00am - 5:00pm

**ONE CALL AWAY**  
TELEPHONE

**01787 211394**

## Bates Wells & Braithwaite



**Expert legal help for business and for individuals...**

- Accident claims - Commercial and company law
- Commercial property - Commercial German legal services
- Employment - Environmental Law -
- Estates, trusts and wills - Family and children
- Farming and rural business affairs
- Health and safety - Licensing - Litigation/mediation
- Residential property - Rural business affairs

**Bates Wells & Braithwaite Solicitors**  
27 Friars Street Sudbury CO10 2AD  
T: 01787 880440 E: solicitors@bwblegal.com



## S B Electrical

**For all your electrical work large or small**

Free Estimates ✓ No Call Out Charge ✓  
A Member of the BSI ✓ Electrical Certificates Issued ✓  
Part 'P' Registered ✓ Insurance Backed Guarantee ✓

**Tel: 01787 247043**  
email: [info@sbelectrical.biz](mailto:info@sbelectrical.biz) or visit [www.sbelectrical.biz](http://www.sbelectrical.biz)  
Church Road, Little Waldingfield, Sudbury, Suffolk

## THE BUTCHER'S WIFE

We've had a double casualty in the Leeder house this week. Firstly, one of the legs from my clothes horse fell off. Okay no big deal, I thought, I'll just use the tumble dryer. As soon as I turned it on it blew all the electrics downstairs and despite my best efforts to turn everything back on from the fuse board, I had to call the Butcher to the rescue. There are certain things about this house that I have no idea about. Electrics is one and heating is the other. I have no idea how to check the oil level or what to do if the boiler isn't working properly (in fact it was only when we had an extension built and a new boiler put in that I even knew where the boiler was and if I'm honest, I'm not entirely sure what exactly it does...).



One morning I came downstairs and the thermostat for the new underfloor heating we have in our kitchen was stuck on. I asked Alexa five thousand times to turn the heating down (which is the extent of my heating knowledge) to no avail. It turned out to be faulty and for two days, in the middle of summer, the temperature inside the house was 35 degrees. Walking on the kitchen floor was like walking on the surface of the sun.

Another area of the house that's not in my remit is the loft. I've never been in our loft for two reasons: 1) I'm too scared to climb to the top of the step ladders and 2) even if I did put my brave pants on, I'm not actually tall enough to pull myself up. So my job is always the 'passer upper'. Which actually isn't as easy as you think. Passing a box up over your head while standing on the bottom step of a ladder can be tricky. I dread to think what state it is in up there and knowing how much the Butcher hoards things, it's probably a tip!

This month's recipe includes some of the amazing smoked chilli honey from Number Eighteen that is made right here in Boxford (and is available to buy from A. Leeder butchers!). Enjoy!

## Easy Crispy Chilli Honey Chicken

Serves 4 – takes 30 minutes, including preparation

### Ingredients

- 4 chicken breast fillets, skin on
- 1 tbsp vegetable oil
- 1 tbsp soy sauce
- 1 lime, squeezed
- 4 tbsp Number Eighteen Smoked Chilli Honey
- 1 lime, cut into wedges (to serve)
- 2 garlic cloves, crushed

### Method

1. Pre-heat a grill pan or frying pan.
2. Ask your local, friendly butcher to trim the chicken breasts and score deep cuts about 2-3cm apart across the skin side.
3. Combine the garlic, soy sauce, oil, smoked chili honey and lime juice to make a glaze. Coat each chicken breast in the glaze equally.
4. Cook the chicken breasts skin-side down in the pan for about 8-10 minutes (depending on the thickness of the chicken). Turn over and cook for a further 8-10 minutes until the chicken is cooked through and the meat is white throughout.
5. Pour the remaining glaze over the top frequently during cooking. At the end the glaze should be sticky, bubbling and unctuous.
6. Serve with steamed white rice, broccoli and a lime wedge, drizzling any remaining sauce left in the pan over the chicken.



**GARDEN DESIGN**  
**BORDER DESIGN**  
**PLANT SOURCING**  
**GARDEN OVERHAUL**  
**GARDEN GIFT VOUCHERS**

**Give your garden the makeover it deserves!**

We are a local garden design company and can offer a complete design, construction and maintenance package or just a planting plan for a single border.

[WWW.ZINNIADDESIGN.CO.UK](http://WWW.ZINNIADDESIGN.CO.UK)

Call Angela for a consultation:  
**01787 212264**  
**07974 375254**

**zinnia**  
 GARDEN DESIGN



**SUFFOLK TREE SERVICES LTD**

**For All Aspects of Tree Works Including:**

- Planting • Reducing • Pollarding • Felling •
- Stump Grinding • Hedging Works •

**We offer a complete and professional service**  
 Established over 30 years  
 We are a local, friendly and experienced company

- Free Estimates • 24 Hour Storm Damage Cover •
- Fully Insured • Tree Reports and Consultancy

Woodchip and Firewood for Sale  
**Tel: 01787 319200**

[info@suffolktreeservices.co.uk](mailto:info@suffolktreeservices.co.uk)  
[www.suffolktreeservices.co.uk](http://www.suffolktreeservices.co.uk)

**STS**



**MILL TYE**

**MILL TYE GALLERY & ARTS CENTRE**

**11 nov 24 dec**

**A Winter's Tale**  
**Printmakers**  
**Exhibition**

starts: Saturday 11 November at 10:30 am

**Featured artists:** Adam Marshall, Andy Lovell, Anne Townshend, Beth Knight, Clare Curtis, Colin Moore, Elaine Marshall, Hannah Forward, Max Angus, Noel Myles, Paul Cleden, Richard Allen and many more...

**Mill Tye Gallery**  
 3 Cornard Mills, Mill Tye, Great Cornard  
 Sudbury Suffolk CO10 0GW

**Opening Times**  
 Thursday to Sunday  
 10:30am to 4pm.

[www.milltyegallery.co.uk/exhibitions](http://www.milltyegallery.co.uk/exhibitions)



**A. LEEDER**  
**Family Butcher**

**Free local delivery\***

- Local British Beef, Pork, Lamb & Chicken
- Fresh bread (from Sparling Faiers, Lavenham)
- Local free range eggs
- Fresh vegetables
- Variety of cheeses
- Homemade sausage rolls, pasties & scotch eggs
- Locally sourced honey
- Condiments, flour, oils and much more!

\*within 7 mile radius of Boxford on orders over £25  
 £3 delivery charge for orders under £25 or over 7 miles

**Open Tues-Fri: 7am - 5pm, Sat: 7am-1pm**  
**33 Swan Street, Boxford**  
**Tel: 01787 210267**  
**[www.aleederbutchers.co.uk](http://www.aleederbutchers.co.uk)**







## RAMBLINGS FROM THE RECTORY

Over the past year, I have been the recipient of some wonderful generosity from parishioners who wish to support their parish priest. Thank you. I am immensely grateful and you know who you are! Generosity stands at the centre of the Christian faith. It is infectious and grows good spirit. One good way of growing our generosity of spirit is to give something away freely, without counting the cost. Giving our time, forgiveness, resources or commitment transforms us from the inside-out. Being generous makes us better people - less defensive, less greedy, less self-interested and more concerned for others. It grows community and our common-life together.

November marks a season in the church often referred to as the season of remembrance. During this period we remember deceased loved ones (and all they have done for us) at our annual memorial service and then later in November we remember those who have made the ultimate sacrifice by giving their lives in wars and the pursuit of peace.

In the four years since I arrived in the Box River Benefice we have seen remarkable change and growth in the amount our church communities are doing and their engagement in their communities. This has only been possible because of the amount individuals are personally willing to give of their time and resources. Some of our congregations have grown in number, the demographic become far more diverse, more children and young families attend our inter-generational services (called 'Pilgrim Services'), and we see wide interest in outreach initiatives such as the regular coffee mornings, fetes, concerts and community meals. Our pastoral outreach through home visits, hospital visits, home communion, telephone and online ministry has been well received by those who are sick or infirm. The ministry we provide to our very fine Church School has focused on nurturing that school's vision and outlook. Many people speak of having encountered God through our services, discussions and groups. I am so thankful and proud of all those who give so much dedication, time, resources and regular commitment to make all this happen. People have clearly felt the positivity of God in this place and have stepped up in response to his call. God gives so richly to us when we put our trust in him. It is lovely to see our church communities modelling themselves on God's generous heart.

When we put God at the centre of the conversation, it can feel challenging. Buying into what he is doing can feel risky. When God challenges us our reaction can be one of resistance or an impulse to run away. Sometimes we use excuses or even anger. Sometimes we project blame onto others instead. But God's self-giving, compassionate and healing love reveals our resistance for what it truly is: at best, a self-indulgent distraction and, at worst, the cause of all of our pain. God is active and prominent in our lives and directs every good thing we do. He is new every morning and yet the bedrock of all time. He is the catalyst for change and yet the changeless rock in which we find our safety and security. He is the fount of all wisdom and the source of all life. He gives us without counting the cost and we see this most perfectly in the sacrifice of his Son, Jesus, or when personal sacrifice is similarly modelled by others. When we model our own lives on his, everything begins to be transformed as we start to live a life the way God intended us to live it all along. Suddenly everything fits into place. God gives so richly to us all, and we recognise that most profoundly when we remain true to him and committed to the service of all.

With much love and every blessing,

*Fr Rob*

[boxriverrector@gmail.com](mailto:boxriverrector@gmail.com) Tel: 01787 210434



### REMEMBRANCE DAY SERVICES

SATURDAY, 11TH NOVEMBER

ARMISTICE DAY, ACT OF REMEMBRANCE  
ST MARY THE VIRGIN, EDWARDSTONE AT 10.45 AM

SUNDAY, 12TH NOVEMBER

REMEMBRANCE CHURCH SERVICE, ST BARTHOLOMEW'S,  
GROTON AT 10.00 LEAVING CHURCH AT 10.40 TO CONTINUE  
AT GROTON WAR MEMORIAL AT 10.50 AM

REMEMBRANCE CHURCH SERVICE, ALL SAINTS', NEWTON AT  
10.00 LEAVING CHURCH AT 10.30 TO CONTINUE AT NEWTON  
WAR MEMORIAL AT 10.50 AM

REMEMBRANCE SERVICE, ST MARY'S, BOXFORD, AT 10.45 AM,  
STARTING AT BOXFORD WAR MEMORIAL

REMEMBRANCE SERVICE, ST LAWRENCE'S, LT WALDINGFIELD  
AT 10.45 AM



### A PRAYER OF COMMEMORATION FOR THE FALLEN

Father of all, remember your holy promise,  
and look with love on all your people, living and  
departed.

On this day we especially ask that you would hold  
forever

all who have suffered during war,  
those who returned scarred by warfare,  
those who waited anxiously at home,  
and those who returned wounded, and disillusioned;  
those who mourned, and those communities that were  
diminished and suffered loss.

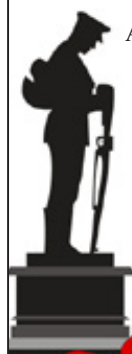
Remember too those who acted with kindly  
compassion,

those who bravely risked their  
own lives for their comrades,  
and those who in the aftermath of war, worked  
tirelessly for a more peaceful world.

And as you remember them, remember us, O Lord;  
grant us peace in our time and a longing for the  
day when people of every language, race, and  
nation

will be brought into the unity of Christ's  
kingdom.

This we ask in the name of the same  
Jesus Christ our Lord. Amen.





# Time to Unwind...

Life can be a LOT! Sometimes, we all need to take a breath and relax a little.



If you're feeling the need to put the brakes on this month, the Beauty team at SMC have the perfect remedy.

Our warm, lava-shell back, neck and shoulder massage is sure to bring you some bliss.

Deeply relaxing, this luxurious treatment will rebalance you: mind, body and soul. And this month, get yours for just £36 (usually £45).

## *November Offer*

*Lava-shell back, neck & shoulder massage just £36 (usually £45)\**

*Call: 01787 211 000 to book*

\* Offer valid once per person until 30/11/2023.

*Suffolk Medical & Beauty Clinic, 6 Broad Street, Boxford.*

*Tel: 01787 211 000    [www.suffolkmedicalclinic.co.uk](http://www.suffolkmedicalclinic.co.uk)*



# BOX RIVER BENFICE SERVICE SCHEDULE FOR NOVEMBER 2023

<b>Wednesday 1<sup>st</sup> November</b> <i>All Saints' Day/All Souls' Day</i>	10:00	<i>Communion &amp; Coffee</i>	Mary's House, Boxford
	18:00	<i>Holy Half Hour Meditation</i>	St Mary's, Boxford
<b>Sunday 5<sup>th</sup> November</b> <i>All Saints'</i>	9:30	<i>Sunday Eucharist</i>	St Lawrence's, Lt Waldingfield
	11:00	<i>Sunday Eucharist</i>	St Mary's, Boxford
<b>Wednesday 8<sup>th</sup> November</b> <i>Saints &amp; Martyrs of England</i>	10:00	<i>Communion &amp; Coffee</i>	Mary's House, Boxford
	18:00	<i>Holy Half Hour Meditation</i>	St Mary's, Boxford
<b>Saturday 11<sup>th</sup> November</b>	10:45	<i>Armistice Day Act of Remembrance</i>	St Mary the Virgin, Edwardstone
<b>Sunday 12<sup>th</sup> November</b> <i>Remembrance Sunday</i>	10:00	<i>Remembrance Service, leaving Church at 10:40 to continue at War Memorial at 10:50</i>	St Bartholomew's, Groton, moving on to the War Memorial
	10:00	<i>Remembrance Service, leaving Church at 10:30 to continue at War Memorial at 10:50</i>	All Saints', Newton Green, moving on to War Memorial
	10:45	<i>Remembrance Service, starting at the War Memorial</i>	St Mary's, Boxford
	10:45	<i>Remembrance Service</i>	St Lawrence's, Lt Waldingfield
<b>Wednesday 15<sup>th</sup> November</b>	10:00	<i>Communion &amp; Coffee</i>	Mary's House, Boxford
	18:00	<i>Holy Half Hour Meditation</i>	St Mary's, Boxford
<b>Sunday 19<sup>th</sup> November</b> <i>2<sup>nd</sup> Before Advent</i>	09:30	<i>Sunday Eucharist</i>	St Mary the Virgin, Edwardstone
	11:00	<i>Sunday Eucharist</i>	St Mary's, Boxford
	16:00	<i>BCP Evensong</i>	St Lawrence's, Lt Waldingfield
<b>Wednesday 22<sup>nd</sup> November</b>	10:00	<i>Communion &amp; Coffee</i>	Mary's House, Boxford
	18:00	<i>Holy Half Hour Meditation</i>	St Mary's, Boxford
<b>Sunday 26<sup>th</sup> November</b> <i>Christ the King</i>	8:00	<i>BCP Holy Communion</i>	St Mary's, Boxford
	09:30	<i>Pilgrim Eucharist</i>	St Mary's, Boxford
	11:00	<i>Sunday Eucharist</i>	All Saints', Newton Green
<b>Wednesday 29<sup>th</sup> November</b>	10:00	<i>Communion &amp; Coffee</i>	Mary's House, Boxford
	18:00	<i>Holy Half Hour Meditation</i>	St Mary's, Boxford



(Morning Prayer online every Tuesday, Thursday and Friday morning from 8.30am)

All our churches across the Benefice are OPEN EVERY DAY for Private Prayer.

If you need support, please contact Fr Rob or the Benefice Office



**BOXRIVER BENEFICE**

**COFFEE MORNINGS**

EVERY TUESDAY, 10.00 AM - MARY'S HOUSE, BOXFORD

FRIDAY, 3RD NOVEMBER, 10.30 AM - ST LAWRENCE'S CHURCH, LT WALDINGFIELD

WEDNESDAY, 15TH NOVEMBER, 10.00 AM - ALL SAINTS' CHURCH, NEWTON

SATURDAY, 18TH NOVEMBER, 10.00 AM - ST MARY'S CHURCH, BOXFORD

**BRING AND SHARE**

**FOOD BANK**

**St Mary's Church, Boxford**  
**(in the North Porch)**

IF YOU OR SOMEONE YOU KNOW IS IN NEED,  
PLEASE VISIT THE FOOD BANK OR CONTACT THE BENEFICE OFFICE FOR A FOOD PARCEL.  
ALL DONATIONS OF NON PERISHABLE GOODS, ARE GRATEFULLY RECEIVED.

**TAKE WHAT YOU NEED, LEAVE WHAT YOU CAN**

**Thank You**





# The Box River Benefice

Boxford, Edwardstone, Groton,  
Little Waldingfield and Newton

## DATES FOR YOUR DIARY

**Thurs 2<sup>nd</sup> Nov 6–9pm** *Christmas Fair*, Edwardstone Church  
**Fri 3<sup>rd</sup> Nov 9am–2pm** *Christmas Fair*, Edwardstone Church  
**Fri 3<sup>rd</sup> Nov 10:30am** *Coffee Morning*, St Lawrence's, Lt Waldingfield  
**Tues 7<sup>th</sup> Nov 10am** *Drop in for Coffee*, Mary's House  
**Tues 14<sup>th</sup> Nov 10am** *Drop in for Coffee*, Mary's House  
**Wed 15<sup>th</sup> Nov 10am** *Coffee Morning*, All Saints', Newton  
**Sat 18<sup>th</sup> Nov 10am** *Coffee Morning*, St Mary's, Boxford  
**Tues 21<sup>st</sup> Nov 10am** *Drop in for Coffee*, Mary's House  
**Tues 28<sup>th</sup> Nov 10am** *Drop in for Coffee*, Mary's House

## LIGHT UP

St Mary's Church, Boxford was lit up on Saturday, 30<sup>th</sup> September in memory of Neville Sargeant, much loved and missed by his twin brother Andrew, on their joint 70<sup>th</sup> birthday.

If you would like further information about lighting up St Mary's Church in "Memory of a Loved one or In Celebration of an Anniversary, Birthday or Special Occasion", please contact the Benefice Office for further information.



## HARVEST THANKS

We had a wonderful and bountiful Harvest in the Benefice, thank you to all our volunteers to planned and organised events, Harvest Cream Tea at Newton, Harvest Supper at Boxford and Harvest Lunch at Edwardstone and thank you to everyone who supported these events.



## ST MARY'S BOXFORD CHOIR

Our choir, led by Tom Cogan, our excellent Organist and Choirmaster, did a wonderful job singing Evensong in St Edmundsbury Cathedral on Saturday, 7<sup>th</sup> October. If you would like to see the photos, please pop along to our Facebook Page:



<https://www.facebook.com/boxriverbenefice>

## ALL SOULS MEMORIAL SERVICE

Will be held at 5pm, on Sunday, 29<sup>th</sup> October at St Mary's, Boxford. The Commemoration of the Faithful Departed, an opportunity for the whole benefice to remember family and friends who have died. Please leave the names of those you would like to be remembered with the Benefice Administrator by 5pm, Wednesday, 25<sup>th</sup> October.

## LICENSING OF NEW MINISTERS

It was a joy to see Sarah, Maggie and David licensed to the Benefice Ministry Team on Sunday 24<sup>th</sup> September at St Edmundsbury Cathedral. We are so very grateful for the talents they bring and the time they give in helping our churches to thrive. As we look to grow and deepen our church congregations, people offering themselves to ministries such as these and other volunteering roles are essential.

## FOODBANK AND WARMSPACE

According to the Met Office, colder days are on their way, which can only mean higher bills. Please remember that the Food Bank at St Mary's, Boxford is here for you. If you are someone you know is in need, please visit the Food Bank or contact the Benefice Office for a food parcel. As always, your donations are gratefully received. We will also be opening Mary's House again as a "Warm Space" most Tuesday, Wednesday and Thursday mornings, between 9am and 1pm, although times may vary, please contact the Benefice Office for further information.

## ST MARY'S CHRISTMAS TREE FESTIVAL

Would you and/or your organisation like to take part in the festival and sponsor and decorate a tree? Spaces are limited, so it's best to book early, please contact [boxriverbenefice@gmail.com](mailto:boxriverbenefice@gmail.com) for more information. There will be a prize for the best dressed tree.

We also have limited availability for stall holders, if you would like to book a stall for £20 for 5 hours, please contact: [boxriveractivities@gmail.com](mailto:boxriveractivities@gmail.com)

## SPIRITUAL GUIDANCE, CONFESSION & PASTORAL VISITING

The Benefice offers a rich ministry of Spiritual Guidance, Confession and Pastoral Visiting. Our Priests and Ministers accompany people from all walks of life. If you would like Spiritual Guidance, Confession, House Blessing or Blessing of Animals etc, Pastoral Visiting, Home Communion or Hospital Visiting for yourself or someone you know, please do get in touch with Fr Rob or the Benefice Office.



# FESTIVE



## DRINKS & NIBBLES

### Friday, 8th December

### at

### 7.00 - 9.00 PM

## St Lawrence's Church

## Little Waldingfield

### £12 per ticket

Available from

Tricia Eddington 247932

or

Nancy Roser 882897

[nancyroser2004@yahoo.co.uk](mailto:nancyroser2004@yahoo.co.uk)




## CONTACT INFORMATION

### Benefice Office

Mary's House, 5 Swan Street, Boxford CO10 5NZ  
**01787 828046** email: [boxriverbenefice@gmail.com](mailto:boxriverbenefice@gmail.com)

Fr Rob Parker-McGee SR

**01787 210434** email: [boxriverrector@gmail.com](mailto:boxriverrector@gmail.com)



**ST BARTHOLOMEW'S  
GROTON**

ARE DELIGHTED TO INVITE YOU TO OUR ANNUAL

**CHEESE & WINE PARTY**

ON

**SATURDAY 2ND DECEMBER**

**7.30 PM**

AT

**GROTON VILLAGE HALL**



ENTERTAINMENT & BAR  
TICKETS £10.00

PLEASE RING 01787 211360  
TO BOOK

*ALL WELCOME, GET IN THE MOOD FOR CHRISTMAS!!*

**THE TRUSTEES OF NEWTON CHARITIES  
(WILLIAM ALSTON)**

ARE PLEASED TO INVITE YOU TO A



**SATURDAY 28TH OCTOBER 2023**  
**10.00 TO 11.30**

**REFRESHMENTS • CAKES • RAFFLE**

PLEASE DO COME ALONG TO FIND OUT MORE ABOUT THE CHARITY  
AND HELP TO RAISE FUNDS TO SUPPORT THE WORK OF THE TRUSTEES  
WE HOPE TO SEE LOTS OF NEW AND FAMILIAR FACES  
THE FIRE WILL BE LIT AND THERE WILL BE A WARM WELCOME FOR ALL.

DONATIONS OF RAFFLE PRIZES, CAKES AND SAVOURIES WOULD BE MOST WELCOME  
AND CAN BE BROUGHT ON THE DAY OR DELIVERED TO:  
SUE PRESLAND AT REDWOODS, CHURCH ROAD BEFOREHAND.  
FOR FURTHER DETAILS PLEASE CONTACT SUE ON 01787 379 204/07881 383 998



**ALL SAINTS' CHURCH  
NEWTON**

**CHRISTMAS  
COFFEE MORNING  
WITH FESTIVE STALLS**

**Saturday, 9th December**  
**10.00 - 11.30 am**

**Christmas Concert**

St Mary's Church, Boxford CO10 5DU

**Madrigalia  
&  
The Boxford String Quartet**

Accompanied by Jill Garrett



**Friday December 8th 2023**  
**7.30 pm**

Adults £10 Under 18s FREE  
Boxford Post Office or on the door  
[www.ticketsource.co.uk/boxford-concerts](http://www.ticketsource.co.uk/boxford-concerts)





BOXFORD COMMUNITY COUNCIL  
In association with  
Boxford Parish Council  
presents

# BOXFORD FIREWORKS Sat 28th October

**LANTERN  
PARADE**  
6.30 from the village

**Fireworks 7.45 on  
The Playing Fields**

**Tickets in advance**  
**Adults £6.00**  
**Children £4.00**

**Tickets on the gate**  
**Adults £7.00**  
**Children £5.00**

**BOXFORD  
COMMUNITY  
COUNCIL**

SUPPORTING COMMUNITY ACTIVITIES IN  
BOXFORD, EDWARDSTONE  
AND GROTON

Charity Number: 304862

**FLEECE JAZZ 2023**

## Fleece Jazz at Stoke-by-Nayland Hotel presents

### Trish Clowes' My Iris

Wednesday 8<sup>th</sup> November 2023 8pm - Tickets: £18



Saxophonist Trish Clowes returns with her new group, My Iris, drawing inspiration from the concept of an iris opening and a kaleidoscopic range of sounds which the band explore.

*Trish Clowes – Tenor sax  
Ross Stanley – Piano  
Chris Montague – Bass  
Joel Barford – Drums*

### Joanna Eden & The Chris Ingham Trio: Embraceable Ella

Tuesday 21<sup>st</sup> November 2023 8pm - Tickets: £19



This distinguished combination present an evening of anecdote, insight and classic songs associated with the legendary First Lady of Song.

*Joanna Eden – Vocals  
Chris Ingham – Piano  
Andrew Lafone – Bass  
George Double – Drums*

**Stoke by Nayland Hotel, Keepers Lane, Leavenheath CO6 4PZ**  
Ample parking; fully accessible. Directions: [www.fleecejazz.org.uk](http://www.fleecejazz.org.uk)  
Tickets: 01787 210796 or via **WeGotTickets** (booking fee applies);  
or on the door (cash or cheque only; sorry no debit/credit cards)  
**\*Friends of Fleece Jazz discount**

**SPECIAL OFFER: A double room with breakfast and two tickets  
from £119 (subject to availability) Phone: 01206 262836**

# FIREWORKS LANTERN MAKING

OCTOBER  
SATURDAY 21<sup>ST</sup> & SUNDAY 22<sup>ND</sup>  
FORMAL WORKSHOP  
MONDAY 23<sup>RD</sup> - THURSDAY 26<sup>TH</sup>  
INFORMAL WORKSHOP  
IN THE SPINNEY 10AM - 4PM



TO BOOK A SESSION  
CONTACT MARK MILLER  
01787 211596  
[BOXFORDCOMMUNITYCOUNCIL@GMAIL.COM](mailto:BOXFORDCOMMUNITYCOUNCIL@GMAIL.COM)

## An Evening with the MILDEN SINGERS

Enjoy a selection of Songs,  
Poetry and Sketches.

### Friday 17th November



**Doors Open at 7pm Show 7.30pm**  
**Tickets £8 in aid of  
Milden Pavilion**

**Evening to include Buffet, Licensed Pay Bar &  
Charity Raffle in aid of Bildeston Food Bank**

**To Book call  
Pearl 07884 167906 or email  
[Info@mildenpavilion.co.uk](mailto:Info@mildenpavilion.co.uk)**

**Milden Pavilion  
Church Road  
Milden  
IP7 7AF**

**www.mildenpavilion.co.uk**  
Registered Charity No 304919



Nayland with Wissington Community Council's

# BONFIRE AND FIREWORKS

**NOVEMBER 5<sup>TH</sup>**

**NAYLAND VILLAGE HALL**

Limited parking in village - Please walk if you can  
Disabled parking only at Village Hall CO6 4JH

Adults £6 - Children £2 - TICKETS IN ADVANCE ONLY  
from [www.naylandevents.org](http://www.naylandevents.org) or Nayland Post Office, Mill Stores & Forget Me Not

★ HOT DOGS ★ SOFT DRINKS ★ MULLED WINE ★  
BEER ★ FISH & CHIPS ★ ICE CREAM ★ CHILDREN'S TREATS

available from 6.15pm  
Display by Firework Crazy  
**STARTS 7pm**  
GUY & BONFIRE after Fireworks

[www.naylandcommunitycouncil.org.uk](http://www.naylandcommunitycouncil.org.uk)

# WINE TASTING

WITH **GEORGE UNWIN** OF **BAYTHORNE WINES**

**7.30 PM SATURDAY 11<sup>th</sup> NOVEMBER 2023**

**LITTLE WALDINGFIELD PARISH ROOM**

**Tickets £17.50 per person**  
(includes all wine, cheese and nibbles)


An opportunity to try something different and order wine,  
delivered in time for your Christmas celebrations

George Unwin will provide expert advice to guide us through an evening tasting a range of interesting wines from around the world. George is an independent wine specialist with a wealth of knowledge and experience who is down to earth, friendly and helpful.



Tickets to be purchased by 8<sup>th</sup> Nov from Sue Bowen 01787 249473  
Heathfield House, The Street, Lt Waldingfield [sd.bowen@btopenworld.com](mailto:sd.bowen@btopenworld.com)

## WHY NOT FACTOR IN SOME "ME-TIME" WITH CULTURE, COFFEE & FRIENDS ???



**THE ARTS SOCIETY STOUR VALLEY** offers a series of illustrated Monthly Talks, Visits, Special Interest Days + an Arts Magazine - all at a very reasonable cost.

**On the 3<sup>rd</sup> Wednesday of each month at 11am**  
**at the Village Hall, Long Melford CO10 9QJ**  
**(opp The Bull Hotel)**

**FOR FURTHER DETAILS:**  
**Contact:** [info@TASstourvalley.org.uk](mailto:info@TASstourvalley.org.uk) quoting **BRN29**  
or via our website [www.TASstourvalley.org.uk](http://www.TASstourvalley.org.uk)

**WEDNESDAY 15<sup>th</sup> NOVEMBER**

**THE SUN KING AND THE  
COURT OF VERSAILLES**

An introduction to Louis XIV and the whole etiquette of  
life at one of the greatest courts in Europe.

FRENCH'S CARE HAVEN PRESENTS

# QUIZ NIGHT

HOMEMADES  
CAKES

RAFFLE

CASH  
BAR

**SATURDAY 18<sup>th</sup>  
NOVEMBER**

**At ANSELL CENTER,  
Hadleigh, IP7 5DL**

**Arrival from 7pm**  
**Quiz starting 7:30pm**



Email: [french.100club@gmail.com](mailto:french.100club@gmail.com)  
Or call Sharon: 07999051401  
Bookings in by 11th November  
Charity Number: 1156954

**£15 PER TICKET,  
INCLUDING FISH & CHIPS  
or VEGETARIAN OPTION**



## EDWARDSTONE CHRISTMAS FAIR

We hope you'll all be at the Edwardstone Christmas fair on November 2<sup>nd</sup> and 3<sup>rd</sup>!

As well as the fantastic selection of stalls, there will also be a tombola, raffle, refreshments and - as entry is free - collection buckets being rattled to raise funds! So remember to bring CASH as well as your credit cards!!

*Christmas - for all of us - starts here!*

## PHYLLIS URCH MEMORIAL CONCERT

Lavenham Sinfonia's final concert for this year is a very special event to be held in Lavenham village hall at 3pm on Sunday November 5<sup>th</sup>. The concert is dedicated to the memory of long-standing friend of the Sinfonia Phyllis Urch. The conductor is renowned cellist John Chillingworth. Tickets are available from

[www.ticketsource.co.uk/lavenham-sinfonia](http://www.ticketsource.co.uk/lavenham-sinfonia).

## CHRISTMAS CRAFT & CHARITY FAIR

Saturday 18<sup>th</sup> November between 10am and 3pm.

At The Old School, Long Melford. Hot & Cold food available.

Free admission & parking.

## POLSTEAD CHRISTMAS FAIR

The Christmas Fair will be on Sunday 3<sup>rd</sup> December and will focus entirely on the festival of Christmas, with all stalls geared towards the Christmas theme.

If you would like to book a table to sell Christmas gifts or goods, please contact Angela on 07969 983554.



ST MARY'S CHURCH, BOXFORD

**Christmas Tree Festival**

IN CONJUNCTION WITH BOXFORD CHRISTMAS FAYRE

Entrance to the Christmas Tree Festival is £2.00 per adult, children are free.  
This includes a programme, voting papers & a children's trail

ALL PROCEEDS WILL GO TOWARDS KEEPING ST MARY'S OPEN AND OPERATIONAL

SUNDAY, 10TH DECEMBER  
10.00 AM - 3.30 PM  
FOLLOWED BY  
**Christingle & Advent Carol Service**  
AT 4.00 PM



**Chelsworth Christmas Fair**

Saturday 2nd Dec

11am - 4pm

All Saints Church

Adults £3

Free entry for children & Chelsworth residents

Refreshments available

Free Parking

Kindly sponsored by the Peacock Inn



THE FRIENDS OF THE CHURCH OF PRESTON ST. MARY  
ANNOUNCING OUR 24TH

**Christkindlmarkt Christmas Market**

SPECIALLY SELECTED CLASSIC  
'GISELA GRAHAM'  
DESIGNER  
CHRISTMAS DECORATIONS

GIFTS \* CAKES \* JAMS  
PRODUCE \* COFFEE  
REFRESHMENTS  
TEAS \* RAFFLE  
GLÜHWEIN

BIDDLE'S BREAD  
SOURDOUGH  
PIZZAS

FREE ON-SITE PARKING

**PRESTON MANOR BARN**  
PRESTON ST. MARY, CO10 9LU  
WITH THE KIND PERMISSION OF WENDY SANDER AND CAROLE ROGERSON  
**SAT. 18 NOVEMBER 2023**  
10AM - 3PM  
**ADMISSION FREE**

ALL PROCEEDS GO TO MAINTAIN THE CHURCH FABRIC REGISTERED CHARITY NO. 1078593

Boxford Drama Group  
presents

# Puss in Boots



By Michael Munn

**29 November - 2 December**

Tickets on sale from 1 November at Boxford Post Office  
or online: [www.boxfordshows.uk/tickets](http://www.boxfordshows.uk/tickets)

Wednesday - Tickets £8.00, no supper and curtain up at 7pm

Thursday to Saturday - Tickets £18 includes a meal in the  
interval and curtain up at 7.30pm. Email  
[catering@boxfordshows.uk](mailto:catering@boxfordshows.uk) any specific dietary needs.

**Boxford Village Hall**

Licensed bar and raffle [www.boxforddramagroup.com](http://www.boxforddramagroup.com)

## Come to A Special Evening of Psychic Mediumship & Psychic Drawing

with Dave Cable and Brian Neal

All beliefs and denominations are welcome!

Venue:

**The Stevenson Centre, Great Cornard,  
Stevenson Approach, CO10 0WD**

**7pm on Saturday November 25<sup>th</sup> 2023**

Tickets:

Tickets are limited -

**£10.00 per person if purchased in advance.**

**£12.00 per person entry on the door**

(only CASH accepted)

Tickets available at the Stevenson Centre  
on Sundays between 2:30pm and 5pm  
or call Maureen on 07931 366 610

Organised by the Sudbury Christian Spiritualist Church

## PUSS IN BOOTS

This year's Boxford Drama Group pantomime is Michael Munn's 'Puss in Boots' from Wednesday 29 November to Saturday 2 December.

On his way back to the mill, Robin, the miller's son chances upon a beautiful young woman, and they fall head-over-heels in love. As fate would have it, the mysterious beauty is none other than the Princess, under the watchful eye of her evil stepmother, Queen Malaria. Only a rich nobleman can marry her stepdaughter! Surely their love is destined never-to-be... *or is it...*? To make matters worse for the poor love-struck Robin, two nasty, money-grabbing bailiffs whisk his parents off to the dungeons on trumped-up charges. How can Robin possibly rescue them and get his girl?

Enter Puss! She speaks, she wears boots, she has a sword and is not afraid to use it. Can this furry swashbuckling hero triumph over the maleficent devil woman Satania, whilst holding off her two wicked sick-kicks? Can she simultaneously keep her cunning plan to fool Queen Malaria into believing Robin is a wealthy suitor for the Princess's hand in marriage? If that wasn't enough, can she save Robin's parents from the dungeons? Phew, she's certainly got her work cut out, but then she is... *Puss in Boots!*

Tickets are on sale from 1 November at Boxford Post Office or via [www.boxfordshows.uk/tickets](http://www.boxfordshows.uk/tickets)

For Wednesday night, the tickets are £8, with no supper and curtain up at 7pm. Thursday, Friday and Saturday night performances the tickets are £18, which includes a Christmas meal in the interval with curtain up at 7.30pm. If you have any specific dietary needs, please email us to let us know, and we will try to accommodate wherever possible. Email: [catering@boxfordshows.uk](mailto:catering@boxfordshows.uk). As always, there will be a licensed bar and raffle each evening.

[www.boxforddramagroup.com](http://www.boxforddramagroup.com)

## Sudbury, Suffolk Christian Spiritualist Church

All beliefs and denominations are welcome!

We meet at:

**The Stevenson Centre, Great Cornard,  
Stevenson Approach, CO10 0WD**

Meetings:

**Every Sunday**

(except December -

we re-start on January 14th 2024)

at

**1:45pm for 2pm to 4:30pm**

There is **NO ENTRY FEE**

We only respectfully suggest that donations  
are made during the service

For more information,

**Call Maureen on 07931 366 610**





# THE FOXES DEN

COFFEE HOUSE AND ROOMS



## CELEBRATE YOUR SPECIAL OCCASION WITH US!

- Exclusive hire, private car park, 5 double en suite bedrooms plus 1 self contained lodge with private hot tub and patio area overlooking the countryside.
- Our restaurant opens Wednesday to Saturday from 8:30am - 4pm, serving breakfast, brunch, lunch and afternoon tea. It's the perfect place to meet up with friends or just pop in for one of our delicious coffees! We also have our alcohol licence.

### THE FOXES DEN

Further Street, Assington CO10 5LD

01787 703 500

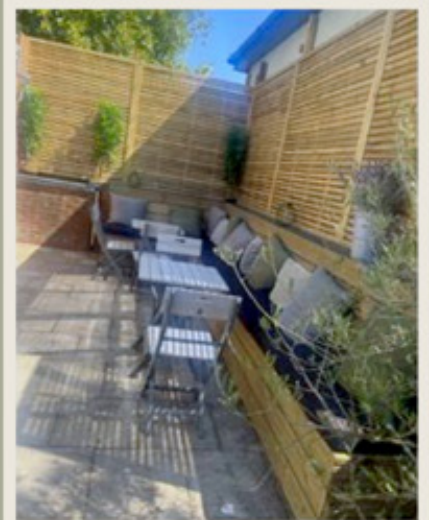


TheFoxesDenAssington



thefoxesden.assington

[www.thefoxesdenassington.com](http://www.thefoxesdenassington.com)



# LEAVENHEATH CINEMA

SATURDAY 4<sup>th</sup> NOVEMBER

## ALLELUJAH

Starring Tom Hanks

Comedy Drama PG-13

Starring Jennifer Saunders, Judi Dench, Derek Jacobi

Arrive 7pm for 7:30pm start

1hr 33 mins with 20 mins interval

Leavenheath Village Hall, CO6 4NS

Please book early to avoid being disappointed

Tickets £4.00 per adult and £2.50 for under 12s

You can pay by cash or card on the door

Reserve your seat online at [www.leavenheath.org.uk](http://www.leavenheath.org.uk) or phone

Marion on 01206 263301 to book your tickets

Refreshments, wine, beer, soft drinks, coffee, tea will be available before the film and also available during the interval along with ice creams.

*Proceeds towards LVH Capital Project Fund (Charity no 262816)*



## WHIST DRIVE

Wednesday 22<sup>nd</sup> November whist drive in Monks Eleigh Village Hall Meeting Room. 7:00pm. Entrance is £3.

We play 18 hands of progressive whist and refreshments are served. We enjoy a social evening of cards and everyone is welcome, even if they have never played before. We hold a bring a prize, win a prize raffle. For information contact Angela on 01449740414.

## POLSTEAD GARDENING CLUB

Our Autumn season of meetings has started and we have some very interesting speakers lined up:

**Tuesday 31<sup>st</sup> October at 7:30pm:** The Secret Gardens of East Anglia with author Barbara Segall

**Tuesday 21<sup>st</sup> November at 7:30pm:** The Butterfly Garden and Changing Environment with Dr Ian Bedford

All meetings will be at Polstead Village Hall on the green in Polstead (CO6 5AL). Free to members.

Non-members are welcome £5 (cash or cheque please). Entrance includes a drink and nibbles.

Queries to [gardeningclubpolstead@yahoo.com](mailto:gardeningclubpolstead@yahoo.com)



## POLSTEAD FILMS

### O Brother, Where Art Thou?

Starring George Clooney, John Turturro, and Tim Blake Nelson.

A Coen Brothers' comedy full of wit, style and zany fun. The film, loosely based on The Odyssey, is set in rural Mississippi during the Great Depression.

Stunning cinematography, toe-tapping bluegrass and gospel music soundtrack.

**Friday 10<sup>th</sup> November 7 for 7:30pm**

**POLSTEAD VILLAGE HALL**

Tickets £4.50

Email: [polsteadfilms@gmail.com](mailto:polsteadfilms@gmail.com) to reserve or buy at Polstead Community Shop.



## MAULDONS HAS BIG PLANS BREWING

Mauldons Brewery has recently doubled in size thanks to the creation of a large purpose-built cold store and Bottle Shop on the Chilton Estate in Sudbury. Mauldons, Suffolk's oldest brewery, looks ahead to an exciting year creating their award-winning ales, whilst offering bespoke brewery tours and tasting sessions.

Last month, Mauldons Brewery's Suffolk Pride took home Gold in the Best British Bitter at the SIBA East Independent Beer Awards. To win with a beer named after the county is incredibly special; we all know that Suffolk is rich in hospitality, history and heritage.



### Brewery Tours and Bottle Shop

Going behind the scenes at a brewery is fascinating, especially one that uses the grain from their family farm to brew. The Brewery tours will be enjoyed in the heart of the brewing area with windows overseeing the whole brewing process.

Mauldons Brewery invite you to pop in and talk real ales with them. Locals are free to try a couple of their ales and pick up their beers for later in the new Bottle Shop.

### The Story Behind it all

From the barley in the fields to the beer in Nedging Hall Estate's pubs, Mauldons Brewery puts sustainability at the heart of what they do. The barley itself is grown on the family farm just a few miles away and the spent grains are then fed to Red Poll cattle, a Suffolk rare breed. The beef is subsequently used in the estate's local country pubs. It's a full circle, leaving the environment in a better state than they found it. Sustainability is at the forefront of Nedging Hall Estate's thinking, a highlight of this being the produce that is grown for their kitchens at the Nedging Hall gardens.

### Serving across the Estate

Nedging Hall Estate owns The Lindsey Rose, a charming 500 year old country pub, The Bildeston Crown, a historic coaching Inn, and real ale pub, The Brewery Tap in Sudbury. You'll find Mauldons on tap or in bottles in every one of their pubs. Their core range is five traditional award-winning ales and they create successful seasonal brews throughout the year, including their Angel ruby ale coming this festive season.

### Plans to grow

As a committed Suffolk brewer and retailer, and with the infrastructure in place, Mauldons looks set to grow and serve pubs across East Anglia and further afield. It's an exciting time for them.

Charlie Buckle, Managing Director of Nedging Hall Estate, commented: 'I am really excited about the future of Mauldons, Suffolk's oldest brewery. This new facility will allow us to not only increase production but store the beer at a completely consistent cellar temperature, ready for delivery to a pub near you! We are putting solar on the roof, allowing the building to be completely self-sufficient'.

For more info: <https://mauldons.co.uk>





THE LINDSEY ROSE  
Est. 1478

## LOCALS NIGHT

Every Wednesday is Burger and a Drink for £15

SAT 4TH NOV FROM 6PM

## FIREWORKS NIGHT PARTY

Our annual event with BBQ, bar, bonfire, fireworks and live music from The Spin Lights

## CHRISTMAS PARTIES

Taking bookings now

01449 741424

Lindsey Tye, Suffolk, IP7 6PP  
[www.thelindseyrose.co.uk](http://www.thelindseyrose.co.uk)



THE BILDESTON CROWN  
SUFFOLK

## GIFT VOUCHERS

THE GIFT OF THE BILDESTON CROWN

Available to purchase at Reception

## CHRISTMAS PARTIES

Taking bookings now

## NEW YEAR'S EVE

Celebrate with a festive menu & live music  
from Anneka Rand

01449 740510

104 High Street, Bildeston, IP7 7EB  
[www.thebildestoncrown.com](http://www.thebildestoncrown.com)



HOLLOW  
TREES  
FARM

# HOLLOW TREES FARM

presents

## 12 MAGICAL DAYS OF CHRISTMAS!

Flying all the way from the North Pole,  
Santa is making a special stop here at  
Hollow Trees Farm for

12 Magical Days of Christmas!

BETWEEN MONDAY 11TH TO FRIDAY  
22ND DECEMBER

you can join him in our Farm Café for  
Breakfast, Lunch or Tea!



Enjoy a festive  
meal in our Farm  
Café, followed by  
the chance to meet  
Santa in his grotto.  
Each child will  
receive a gift from  
Santa too!



SCAN FOR MORE  
INFORMATION  
AND TO BOOK  
YOUR TICKETS

📍 Hollow Trees Farm, IP7 6HX 🌐 [hollowtrees.co.uk](http://hollowtrees.co.uk)

☎ 01449 741247 ✉ [shop@hollowtrees.co.uk](mailto:shop@hollowtrees.co.uk)

# JACK'S HOME TRUTHS

A monthly column still has the capacity to date rather quickly although it seems remiss to not make reference to the Indian summer that has characterised Autumn has provided a much welcome boost to the attitudes and well-being of our clients, purchasers and colleagues alike. Having seen the traditional house selling seasonal pattern thrown into chaos by the volatile economic conditions of recent years, 2023 has seen a gradual return to a more traditional cycle that those experienced heads within the David Burr Group have become accustomed to over the years.



With inflation and interest rates having found a level of stability not seen since early 2022, we have enjoyed a far more productive period with a greater volume of our sales achieving an exchange of contracts and subsequent completion. Volatile interest rates create uncertain buyers, not an appealing factor within a system that provides precious little certainly until the point that a legal exchange of contracts has been achieved. We are pleased to report that the worst of this now appears behind us. Whilst unquestionably a welcome development, we are seeing the impact of a sustained period of high inflation on spending habits of our purchasers. A greater proportion of our purchasers are opting to tie in the sale of a property with a purchase, as a result we are seeing a marked increase in the number of chains across the David Burr Group. This shift in purchasing pattern has put a closer spotlight on the value that an experienced estate agent can bring to not only the process of marketing and negotiating the optimum sale price but also to getting ahead of and avoiding the many hurdles and delays that can beset the conveyancing process.

The increase in the available level of supply to the market caused by the higher proportion of chains across our portfolio has been tempered by a gradual fall in mortgage interest rates, keeping those considering a move engaged with the ebbs and flows of the regional housing market. As we have learned over many years, remaining calm under pressure whilst rationally appraising the available options for our clients based on both current and projected market trends allows us to offer balanced advice, based not only on our personal and collective experience but also the wealth of data that the increasing relevant property tech allows us to access.

Typically a less robust sales market coincides with a more buoyant lettings market and 2023 has shown these trends to be time honoured. A government white paper relating to minimum standards relating to energy efficiency ratings has seen a protracted departure of a proportion of landlords, coinciding with a period of higher interest rates which is leading to a greater number to reconsider the merits of the lettings market. The increasingly onerous regulation and legislation within the lettings sector is seeing a greater proportion of our clients than ever before opt for our fully managed service whilst we remain on hand to offer a template of requirements for those looking to manage their lettings themselves.

Our ethos of promoting from within has continued with Lewis Wingate announced as Director of our Bury St Edmunds office. Lewis is the latest of our directors that have progressed from a Sales Negotiator role all the way through to Director level and

we urge any ambitious, capable individuals with a desire to work within a dynamic, forward-thinking company within the property sector to get in touch.

The warmer weather continuing through autumn has seen a consistently strong level of occupancy across our holiday let portfolio with demand ranging from those looking to escape the hustle and bustle of city life, those looking to enjoy some precious time with family in the local area and those looking to take advantage of the exceptional countryside and breadth of facilities that continue to flourish throughout East Anglia.

Demand and interest across Suffolk, Essex and Cambridgeshire has seen renewed attention from Londoners seeking a more balanced way of life. Colleagues in the London office have been taking trips out to visit properties in East Anglia and speaking with existing clients both in person and via phone to highlight the benefits that our presence in central London offers.

As always, should you require any advice or opinion regarding any property matter then please do not hesitate to contact me.

*Jack Thornley*

*Director, David Burr Estate Agents* <https://davidburr.co.uk>  
[jack@davidburr.co.uk](mailto:jack@davidburr.co.uk) | 01206 263007

## BRIAN TORA'S SOAP BOX

A little over 32 years ago, fresh from my success as a freelance contributor to the BBC's London local radio station - then called Greater London Radio, or GLR - I knocked on the door of Broadcasting House in St Matthew's Street, Ipswich to ask the newly formed BBC Radio Suffolk if they could use my investment knowledge in their programmes. Ivan Howlett, who was then managing editor of the station, made some phone calls to check me out and within a few weeks I was part of their Breakfast Show. It was just a year after the station had been launched.

The assistant to Chris Opperman, who presented the programme, was one Mark Murphy, now a highly regarded broadcast journalist who has earned an MBE for his contribution to local good causes. It happened I already knew Mark as he had been on the service desk of the garage in Ipswich where I had my car serviced. Mark grew in stature over the years and won a number of prestigious awards for local broadcasting. How sad then that he chose to withdraw from the station he had worked for so assiduously for many years because of the changes introduced by his BBC bosses.

My wife and I have long been strong supporters of our local BBC station. We even listen to it when we are in Portugal. But the ill-thought-out changes introduced by the BBC management have led us to surrender our support and switch to alternative broadcast media. There are now just two locally produced programmes that run during the week, though some news and coverage of Ipswich Town's football's results do percolate through the otherwise opaque ether that now represents BBC local radio.

The talent that has been squandered as a result of what I can only assume is an effort to reduce costs is unbelievable. We have seen a number of local broadcasters who have been familiar voices to us here in Suffolk depart. Mark Murphy is the highest profile, but his wife, Lesley Dolphin, has also gone, admittedly into retirement. Stephen Foster - or 'Foz' to his fans - has also stepped aside, but many of these veteran broadcasters can now be found on a new station, Suffolk Sounds.

And this is not just a local issue confined to radio. There is plenty of evidence of other local radio stations losing seasoned presenters in the BBC's cut back on smaller station output. Let's face it, most of us around here are mainly interested in what is relevant to Suffolk. Learning what is happening in Norfolk, Cambridgeshire, Northampton and Bedfordshire doesn't float our boat. And the departure of familiar faces from the Look East team on television



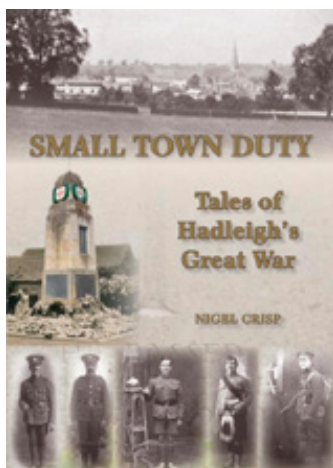
is another indication that the accountants are now in charge of local broadcasting.

One of my sons contributes a broadcast on a community radio station in the south of England. He is not paid for his contribution, but rather feels it is his duty to bring some local relevant information to his near and not quite so near neighbours. I applaud his dedication, but it cannot replace the benefits delivered by trained journalists and broadcasters that can be provided by the BBC. Auntie's explanation is that more people learn about what is happening locally via the internet and social media. Well, I don't. Do you?

Perhaps we need a campaign to try to restore our much loved – and lost – local broadcast programmes. Certainly, those affected by these changes have been very vocal on social media if the posts I have read on Twitter (or should that be X?) are anything to go by. I have been a contributor to national and, indeed, international broadcasts, both on radio and television. But I have always felt closer to my audience when talking to the local listener. Do you agree with me that the changes to local broadcasting are a mistake? If so, please do something about it.

Brian Tora

## HADLEIGH GREAT WAR BOOK



**SMALL TOWN DUTY**  
Tales of Hadleigh's Great War  
by Nigel Crisp

Published last year, this book chronicles the war of 1914-1918. It tells and illustrates from a perspective of the time, the many stories of the Hadleigh men who left the town to go to war. Written over 400 pages we see: how three 14-year-old boys enlisted in the army; Hadleigh's blackest day when 16 men were killed at Gallipoli; the witnesses of the

Somme and Passchendaele; the final victory and the shadow of aftermath leading to the death of Hadleigh's last Tommy in 1985. And much more.

Of the book others have said:

*"A comprehensive collection of tales about Hadleigh and its people at a time of great national struggle."* Mark Brennan

*"A work unrivalled in recording the impact of the Great War on a Suffolk town."* Friends of the Suffolk Regiment

*"A fitting tribute to the men of Hadleigh remembered within its covers."* Sue Andrews

*"Secrets of Hadleigh's war heroes brought to life."* EADT

*"Hadleigh war heroes in new book include rock legend's grandfather."* Ipswich Star

Priced at £25 the book is available from: Keith Avis the Newsagent, The Idler Bookshop, Hollow Trees Farm Shop at Semer, ebay or directly from the author at 85 Angel Street, Hadleigh, 01473 822208, [nigel\\_crisp@hotmail.com](mailto:nigel_crisp@hotmail.com)



## KENNY'S NEWS FROM SESAW



Is it too early to mention the 'C' word when bonfire smoke has yet to fill the chilly evening air? I hope not because one of our supporters has the ideal gift for avid readers. They say everyone has a book inside them. Well in Frank Payne's case it's not one, not two - but three!

Frank Payne started to chronicle his full and interesting life during lockdown, as a fundraising exercise for SESAW. *"Here Today, Goon Tomorrow"*

began with his childhood in wartime London to a promising career in sports journalism cut short by National Service. *"Well Worth Waiting For"* charts extreme highs and lows in sales and advertising, whilst raising a family and rescuing dogs.

The trilogy is completed with *"It All Kicks Off on Sunday"* which lifts the lid on the inside story of football after forty three years as a referee. Our awesome author is offering all three volumes for £12, a perfect Christmas present or enjoyable holiday reading for you. Frank is donating all proceeds to SESAW, please phone him on **01206 263006** or email [cahors@live.co.uk](mailto:cahors@live.co.uk) to place an order.

Look out for our SESAW stall at the Charity Craft Fair

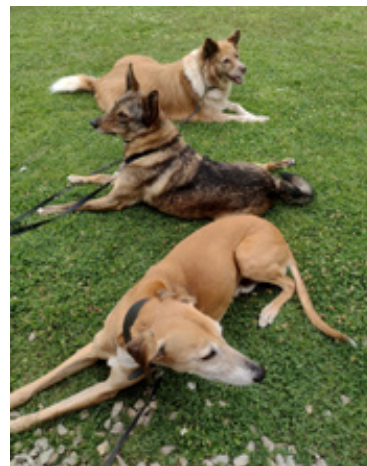
on Sunday 18<sup>th</sup> November at the Old School, Long Melford, CO10 9DX. A bumper festive event, open 10am-3pm.

Please keep your pets safe during the firework season and check for hedgehogs before you build a bonfire. Mum says when the clocks have gone back (where to, I know not!) and Autumn has arrived, our opening hours are subject to change so please check before visiting us. Mum also says that's quite enough writing from me, I'm not to get any big ideas, the world is not ready for the memoirs of me,

Kenny (the Boss) Chihuahua

Suffolk & Essex Small Animal Welfare,  
Stoke Road, Leavenheath, CO6 4PP.

Tel: **01787 210888** Web: [www.sesaw.co.uk](http://www.sesaw.co.uk)



Frank's rescue dogs.

## IT ALL KICKS OFF ON SUNDAY

It's here at last, enabling me to fulfil the promise made of a third (and last) book, *"It All Kicks Off On Sunday"* - concentrating upon my 42 years as an Essex qualified football referee, dealing with countless incidents happening both on (and off) the park. The editing team have described it *'brilliant and witty'* - their words, not mine. It will be available for sale at £8.50 from Sept 28<sup>th</sup>, £5 for local purchasers. It also details how my wife and I have rescued and homed 15 dogs and many other animals.

This book and both prequels: *"Here Today GOON Tomorrow"* and *"Well Worth Waiting For"* are also available as a bundle for just £12 - an excellent Christmas gift bargain set for the reader in your life.

I will be pleased to sign all the new books for new orders. Please call me on 01206 263006 or e-mail [cahors@live.co.uk](mailto:cahors@live.co.uk). I promise all orders will be delivered well before the festive season.

Frank Payne



## New Strength & Balance Class Boxford

Boxford Village Hall, Stone St Rd, Boxford, Sudbury CO10 5NP

**Mondays 11:30am-12:30pm**

First session on **Monday 6th November is a free taster**, so come along and give it a go!  
Followed by 6 weekly sessions subsidised by Fit Villages at **£3** per week till 18th December  
Then hopefully continued by the instructor independently for years to come!

**Strength & Balance (Otago) classes consists of mainly chair based activity and are designed to stabilise the body and prevent falls by strengthening muscles and improving balance in older adults**



**To book or for more information contact the instructor Georgina  
Tel: 07547 927238 Email: [georgina.burr@moveitorloseit.co.uk](mailto:georgina.burr@moveitorloseit.co.uk)**

For any other queries contact **Janet Lawrence** on [Janet.Lawrence@activesuffolk.org](mailto:Janet.Lawrence@activesuffolk.org) 07557 633724

## READER RECOLLECTIONS

Lynn Sargeant writes in: *"I have just found some lovely old photos and thought you may like to publish them. It was around 1982 when Mrs Mildred Blakiston who lived in Church Street tried to drive her Mini Auto out of her garage. She ended up driving it backwards across the surgery driveway and into the river Box! Yes, it was never boring working at Riddelsdell's Garage. The car escaped with minimal damage to its exhaust and Mrs Blakiston said 'I don't know what happened there' and of course she still continued to drive completely undaunted."*

If you have a story you'd like to share with the Box River News, we'd love to print it! Email: [editor@boxrivernews.com](mailto:editor@boxrivernews.com)



Mrs Gaussen, Gerald Richardson and Albert Crichton looking at it in disbelief.



Roger Vipond got into the Mini, started it and drove about in the river, luckily there wasn't much water at the time.



It was hooked up to the tow bar on the Land Rover and lifted out, with Roger and Richard Stacey physically lifting it.....all this happened before the days of 'health and safety'!

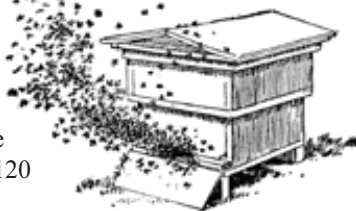
Editor's note: Mildred Florence Blakiston (1891-1985) was a well-known colourful character in Boxford. She was one of the very first pupils at the East Anglian School of Painting and Drawing, whose alumni include the likes of Lucian Freud and Maggi Hambling.

Another story about her tells of the time when a lorry driver was driving down School Hill, Boxford. In front of him was Mrs Blakiston in her Mini. Without warning she suddenly braked and swerved left into the surgery driveway. The lorry driver slammed on his brakes, wound down his window and shouted: "What the hell are you doing? Why didn't you signal?" to which she serenely replied, "I don't need to indicate, everyone knows I live here!"



# NOTES FROM A BEEKEEPER'S DIARY

We normally think of the pagoda shaped box with a pitched roof as a traditional beehive, but this style has only been around for the last 120 years or so.



From the Middle Ages until the beginning of the twentieth century beehives in Europe were made from wheat and other grain stalks twisted together into a thick rope which was then wound round and round and fastened into a conical shape. Placed upside down on a wooden base with a small hole for the bees to go in and out these 'skeps', as they were called, provided a warm, dark home for the bees, and the rough interior was ideal as an attachment point for the honeycomb inside.

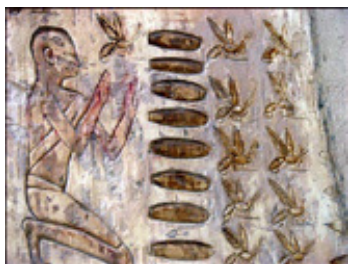
These early hives were easy to make and above all, cheap, with a ready supply of straw as a by-product of wheat and barley harvests. Straw was compressed by passing it continuously through a funnel made from a cow's horn, which also ensured that the "rope" was of even thickness. Successive layers were fastened together with bindings made from bramble stems, stripped of thorns and leaves before being split, de-pithed and stropped to make them more pliable.

The straw skep suffered from one great disadvantage – the difficulty in separating the honey from the bees. One solution was to throw the whole skep into the nearest mill pond. Unfortunately, few of the bees would survive. Alternatively, the skeps would be suspended over a pit filled with burning sulphur. This would lead to the bees being suffocated but inconveniently would not improve the honey.

We can't say for sure when people started actively managing honeybees in hives instead of simply gathering honey from wild nests, but archaeological evidence shows that beekeeping was well established at least 5,000 years ago in countries around the Eastern Mediterranean basin.

Hives used then were quite different from those of today. Bees were kept in rows of cylindrical tubes about 15 inches in diameter, made of dried mud reinforced with straw or grass and stacked one on top of the other. The earliest examples date from excavations in the Jordan valley and still contain the odd mummified bee.

Paintings on Egyptian tomb walls dating from 1500BC show beekeepers tending these hives and extracting honeycomb to be made into honey cakes. In one panel a beekeeper can be seen using smoke to pacify the bees, common practice to this day. Writings on surviving papyrus scrolls indicate that beekeepers moved their hives up and down the river Nile to benefit from different sources of nectar. More intriguingly there are accounts of beekeepers singing to the bees to entice the queen bee to leave the hive. All the other bees in the nest would have followed her to safety while honey was being harvested. Truly a long-lost skill.



Similar structures can still be found in Egypt today, where wood is scarce and expensive and money tight. Indeed, beekeepers have always been inventive in using cheap available materials to fashion hives. In the twentieth century beekeepers in the Appalachian Mountains of the United States were still making hives from hollow sections of the gum tree. Roughly formed pieces of wood were inserted like perches for the bees to hang their honeycomb from. A

roof was fashioned out of scrap timber to protect the colony from rain and snow.

Over the centuries various attempts were made in Europe to create a more satisfactory type of hive. In 1654 the young Christopher Wren was commissioned to design a beehive by John Wilkins, the future Bishop of Chester, not so much to make beekeeping easier but to facilitate research into the behaviour of bees within the hive. Although Wren's design proved to be less than satisfactory for honey production, further development of his ideas continued for well over 300 years. Wren himself moved on to greater things, and by 1666 had work enough rebuilding St Paul's cathedral after the great fire without worrying about designing beehives.

In the seventeenth and eighteenth century Europe's natural scientists were designing different forms of hive components to facilitate research into honeybee lifestyles and behaviours. In the early nineteenth century John Dzierzon, a Roman Catholic priest in Poland, devised a system of frames enabling comb with bees and honey to be removed from the hive without destroying the structure of the nest.

Dzierzon's published work came to the attention of another cleric, this time in the USA - the magnificently named Reverend Lorenzo Lorraine Langstroth. Langstroth pulled together the ideas of Dzierzon and others and in 1852 patented the Langstroth hive, on which most modern beehives are based, including the pagoda hive. Known rather unoriginally to beekeepers as the WBC hive after it's Yorkshire inventor William Broughton Carr, they are still popular today.

Unfortunately for Langstroth the hive he designed proved too easy to copy and could easily be made by any jobbing carpenter. Defending the patent proved impossible, and Langstroth hives or their derivatives can be found in virtually any country in the world. Nevertheless, with this legacy he can truly be considered the Father of Modern Beekeeping.

*Tony Rand*



## READERS' LETTERS

*Dear Editor,*

Since I retired from my Bonsai Business I have got into the habit of walking each morning for exercise. I usually walk down Wash Lane and at the T junction at the bottom I turn left down to the cattle grid and beyond.

On the 9<sup>th</sup> August 2022 I came across a lady at the T Junction at the bottom of Wash Lane.

I said hello to her and that I walk down there most mornings and had never seen her before.

She was about 6' tall, blond to red hair and extremely colourfully dressed. She said to me that people call her the 'Old Lady Of Boxford' and she lived in an old red bricked cottage down the lane.

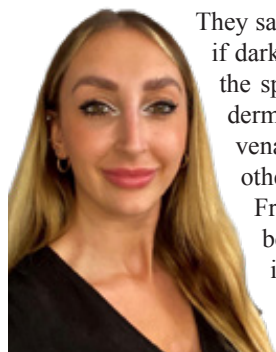
I was standing right in front of her while we were talking and she suddenly disappeared. Until that moment I had never believed in ghosts but I do now.

**SHE HAD TO BE A GHOST.**

I think Box River News readers will be very interested in my experience.

Yours sincerely,  
*David Paget.*

# THE GLOW PRO



They say the eyes are the window to the soul, but if dark circles and puffiness seem to be stealing the spotlight, it's time for change. Apart from dermal fillers, which can work wonders in rejuvenating this delicate area, there are various other methods that can help.

From revitalising eye creams to at-home beauty hacks, the possibilities are seemingly endless... which is why I'm here to help!

## So, what causes dark circles?

The skin under our eyes is much thinner than the rest of the face and body, making it susceptible to environmental damage. Age, hyperpigmentation, lack of sleep, heavy rubbing of the eyes, and too much alcohol, can all contribute to pesky dark circles. Having said that, they're sometimes hereditary (thanks, Mum)!

## Have you tried an eye cream?

If your skincare routine is on point and your under-eye area doesn't concern you, there's probably no need to invest in an eye cream just yet.

However, if you're tired of looking or tired or perhaps your concealer isn't quite doing the trick, introducing an effective eye cream is an excellent initial step.



## For firming...

If your goal is to noticeably firm and minimise fine lines around your eyes, opt for a medical-grade product that's backed by research.

The ALLSKIN|MED Firming Eye Cream 15ml (£50 in the clinic) is our hero product and a godsend for transforming fatigued-looking eyes. It's loaded with brightening pigments for dark circles, growth factors that ramp up cell turnover, and rejuvenating ingredients to give a more youthful appearance. For me, it's worth every penny and a little goes a long way!



## For puffiness...

Much like how coffee is my wake-up call, eye creams enriched with caffeine have the ability to perk up weary eyes. How? Well, caffeine boasts antioxidant qualities that can temporarily reduce puffiness and inflammation.

The Inkey List Caffeine Eye Cream 15ml (£9.99 from Boots) is a popular and budget-friendly option. Its lightweight formula melts into the skin and even leaves a cooling sensation, helping to create a revived and de-puffed appearance.



## For brightening...

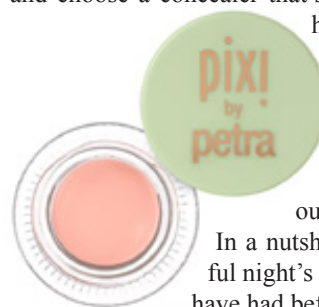
It's widely known that vitamin C adds radiance to your complexion. As a potent antioxidant, it can improve uneven skin tones whilst also combating free radical damage, a common factor that contributes to hyperpigmentation and premature ageing of the skin.

So, if your dark circles stem from hyperpigmentation, there's a good chance that consistent use of vitamin C may help to revitalise them – providing you also apply your SPF!



## For concealing...

To banish dark circles in seconds, consider a little makeup trickery and choose a concealer that's specifically designed to correct and hydrate the under-eye area.



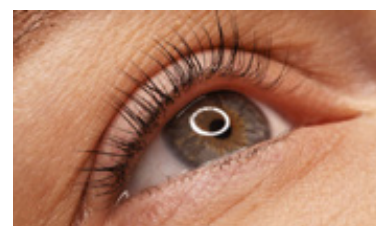
Pixi's Correction Concentrate Brightening Peach 3g (£12 from Sephora) effortlessly blends into the skin and camouflages dark circles thanks to its rich pigment, without settling into creases.

In a nutshell, it gives the appearance of a restful night's sleep, regardless of the night you may have had before!

## For highlighting your eyes...

Lash lifts (£45 in the clinic) provide a semi-permanent curl to your lashes, lifting them up and out, for the illusion of longer, darker lashes.

As a result, this shifts the focus away from under your eyes, by highlighting your eyes and creating a more wide-awake look. The best part? You can enjoy 4 - 6 weeks without the need for mascara.



## For free (& for fun)...



For a convenient beauty hack to tackle puffiness, look no further than your kitchen cupboard! Simply chill a pair of metal spoons in the fridge for about 30 minutes so that they are cool, not icy, then gently press the spoons against your eyes for a few seconds.

The coolness can help by shrinking dilated blood vessels, whilst

the slight pressure provides a boost to your lymphatic system, reducing fluid retention.

You may get a few curious looks, but hey, with spoons over your eyes, you won't even notice!

Helena x

office@suffolkmedicalclinic.co.uk  
01787 211 000

**Suffolk Medical & Beauty Clinic**  
Medical Aesthetics



# HADLEIGH & BOXFORD PPG

To date over 2,515 covid and 1,912 'flu jabs have been given to the 65+ cohort in Hadleigh including those in our five local care homes. The health centre fulfilled the target, set by NHS England, to have all eligible patients vaccinated by the end of October. This has been a considerable challenge for all involved not least for patients themselves. Thanks to their stoical resolve and the practice's noble efforts, a record number of vaccinations were given at each of the three Saturday



Jenny Howarth minds Elvis

and some Wednesday afternoon sessions. The 'no show' patients of past years have always been 20 to 30%. This was not the case this year. This, plus the lack of alternative NHS venues and patients concerns about the new strain of Covid, made the first clinic exceptionally busy. Extending the hours of the clinics and increasing the number of vaccinators helped cope with the extra uptake at the subsequent vac sessions. As ever, the team of volunteers did their best to support the public and the clinicians both inside and outside the health centre. This even extended to doggy minding (see photo).

Happily, the majority of patients were understanding and appreciated their efforts in difficult circumstances but, sadly, there were some who saw fit to abuse the volunteers.

We are pleased to report two new members have joined the practice. A warm welcome to GP Dr Laura Cattermole who started in October and physiotherapist, Matt Coombes. Matt has additional qualifications which will enable patients to make him their first port of call for musculoskeletal conditions.

Online appointments are posted on the practice website each morning between 6am and 7am. If you wish to take advantage of this method of booking one of the receptionists will give you the necessary information.

There is a new kid on the block, 'Our Future Health' is seeking your personal details for their mega-national database. This will form the basis of their extensive research into the current and future health of the nation. The NHS appears to have some affiliation to the initiative but are not running it. Blood donors are being encouraged to take part. Fortunately, you only participate if you sign one of their extensive consent forms giving you time to look carefully into the scheme. The following quote is the response I received when I asked for more information

*"Our Future Health is a collaboration between the public, charity and private sectors. We have initial funding from the UK Government. Support will also come from companies that make medicines, equipment used in healthcare and charities."* If you would like to know more check out the link below.

**PPG Chair:** Jan Devey 01473 827 091

**Email:** [deveys@btinternet.com](mailto:deveys@btinternet.com)

**Website:** [www.hadleighhealth.co.uk](http://www.hadleighhealth.co.uk)

**Facebook:** <http://bit.ly/Hadleigh-Group-Facebook>

**NHS App:** [www.hadleighhealth.co.uk/the-nhs-app](http://www.hadleighhealth.co.uk/the-nhs-app)

**Our Future Health:** <https://ourfuturehealth.org.uk/about-us>

## Ipswich Veterinary Centre

For a professional caring service

- 24-hour hospitalisation and emergency care provided on-site
- Advanced diagnostic imaging including CT scanning service
- Veterinary referral services
- Physiotherapy and hydrotherapy
- Pet behaviour counselling, dog agility and training classes
- Pet shop and grooming lounge.



An Independent Veterinary Practice with a personal approach

A member of **FIVP** Federation of Independent Veterinary Practices

**Tel: 01473 555 000**

[enquiries@ipswichvetcentre.co.uk](mailto:enquiries@ipswichvetcentre.co.uk)

[www.ipswichvetcentre.co.uk](http://www.ipswichvetcentre.co.uk)

1 Donald Mackintosh Way, Scrivener Drive, Ipswich, Suffolk IP8 3SU



## MILDEN PAVILION & PLAYING FIELD AVAILABLE FOR HIRE

In a beautiful setting with use of the playing field & well equipped kitchen

Ideal for children & family parties

Hire for private functions & meetings

Available for fitness classes with changing facilities

Cricket pitch & equipment for hire

Registered Charity No 304919

[www.mildenpavilion.co.uk](http://www.mildenpavilion.co.uk)

[info@mildenpavilion.co.uk](mailto:info@mildenpavilion.co.uk)

or find us on Facebook: [www.facebook.com/Mildenpavilion](http://www.facebook.com/Mildenpavilion)

## A place to feel lighter, slow down, reconnect and relax into your body.

Chiropractic is a hands-on approach to wellness, caring for many conditions including:

- Back, Neck & Joint Pain
- Plantar Fasciitis
- Osteoarthritis
- Stiffness
- Muscle Spasms
- Tension & Stress
- Sciatica & Migraines
- Poor Posture



Enjoy your first chiropractic appointment with Inga, including a treatment, for £70.

Book online

[kineticsuffolk.com](http://kineticsuffolk.com)



KINETIC HEALTH

1 Maiden Way, Hadleigh, Ipswich IP7 5EH

Call

01473 806240

WhatsApp

07971 553050

[@kineticsuffolk](https://www.facebook.com/kineticsuffolk)

## Flooding in Boxford over the ages.

While rummaging through the masses of documents in the Boxford Archive for material on the River Box, I came again upon a newspaper article about a flood in 1888. It is sufficiently detailed to be able to match events to some of the village buildings and is reproduced below.

No doubt villagers at the time of the Great Famine 1314-1317 will have suffered from floods during that period of cold weather and high rainfall. General records for Suffolk show that it was particularly bad here with crops being decimated and animals being drowned. Since the earliest settlement there will have been regular floods in the village, as there is no wide flood plain to take flood water. Even the dead were not spared, as there are records of the water table being so high coffins were rising up in the graveyard to the distress of the villagers.

In 1845 a "barrel" drain was placed under the length of Swan Street. Its main purpose was to take storm water coming off the fields from Groton directly down to the River Box, and to try to stop the water forming a torrent down the road into the village. If you stand on the bridge looking down river, the exit of this drain can still be seen today in the left hand brickwork. After rain there is still a vigorous flow. Despite the drain, the worst flood recorded was on 18<sup>th</sup> September 1888 when water swirled through the village causing considerable damage. It appears to have rushed down Swan Street, Fen St and Butchers Lane and then on via the Box River valley to Stone Street hamlet, where it appears that the stream coming down from Hockley Hole was also in full flood. The newspaper recorded it as follows. Notes in italics have been added for clarity.

**Newspaper Report. September 24<sup>th</sup> 1888, BOXFORD .**

### THUNDERSTORM AND FLOOD

A fearful thunderstorm passed over this place on Wednesday when a greater amount of damage was done than has ever before been experienced. At about 3 pm the rain began to fall and the thunder to roll and from that time the storm continued to rage uninterruptedly till five o'clock. The lightning apparently did no damage but unfortunately the rain, which came down part of the time in torrents, converted Boxford Street [*now Swan St*], into something like a rapid flowing river, the water rushing down (at times two or three feet deep) with terrific force, making great ruts in the road, at some places several yards long, and as straight as if lined out and cut by pick and shovel. [*It was still a track without tarmac.*]

At other places the earth, stones and bricks were torn up to the depth of four or five feet, leaving great holes three to four feet wide, and at places several yards long. The most dangerous of these was one against Mr. Jos. Watson's [*boot and shoemaker*] where the soil was so much torn away that the foundations of the house began to give way, and at one time there was some fear that part of the house would fall in. All this time the water was carrying tons of earth, stone, bricks, and etc. down the main street, making it dangerous both for pedestrians, and horses and carriages. Articles of a very miscellaneous nature were brought down by the stream. There were saucepans, tin ware, bottles, bones, bellows, boots, etc., and at one time it seemed as if someone's orchard was being carried away by the stream, as the apples came down very plentifully. A great many of the houses were flooded, and considerable damage was done at Mr. Brett's where the water came in at the back and was very soon flowing out at the front door, and for several hours he had quite a miniature waterfall at the front door.

The Chapel House, the residence of the Rev. W. Butcher, was flooded, the garden and part of the chapel wall and iron rails were thrown

down by the force of the water. The lower part of the White Hart, the brewery, and the stables, were all flooded, the water lifting the grass-box from a mowing machine which was carried away by the stream like a sheet of paper.

In Builder's Lane [*could this be Butcher's Lane?*] the traffic was quite stopped, about fifty yards of the bank being down. The Lane was quite blocked. In Stone Street the severity of the flood was experienced, the accumulated water against a brick wall, about thirty feet long, of Mr. R. Hill's, forcing it down with a crash, rushing across the road, bursting in the shop door of Mr. D. Grimwood, grocer, etc., doing considerable damage to the stock and carrying away a large quantity of goods, amongst other things several hundred weight of soap.

At the cottage next door considerable damage was done to the poor woman's things. Mrs. Spooner is a machinist, and a great part of the work she had in hand, eight or ten pairs of trousers, were carried away or damaged, whilst a large double chest of drawers was lifted from the floor and thrown down. In some of the houses the water was deep enough to float the furniture.

Groton House and Edwardstone House, although standing high, did not entirely escape, both being partly flooded. All the lower part of the house and premises of Mr. Amos Tiffen was flooded - in fact, very few entirely escaped.

Fortunately there were no personal accidents. Mr. James Moffat, of Ipswich, states that he had a narrow escape of his life. Whilst driving into Boxford by Groton, and going through about two feet of water his horse stepped into a hole caused by the strong current, and nearly fell, but recovered itself only to pull the four-wheeler in. After several struggles, however, it managed to clear itself.

Another Ipswich traveller was about to start as the storm commenced, but he deemed it advisable to stay the night. Mr. Stephen Scarfe, miller, whilst going home from Hadleigh market, drove into a hole caused by the water. His horse fell, and Mrs. Ford, of Cotton, and a child, who were with him, were thrown out. The child sustained a severe cut over the eye, whilst the wheel passed over Mrs. Ford's legs, luckily not breaking them. Mr. Thompson [*local surgeon & physician*] was summoned, and both are progressing favourably.

Stone Street seemed to come off worst than all. The walls were washed down, and most of the houses were flooded. One poor woman was baking, and had to take refuge on the top of the table. This did not prove high enough, and she was rescued after a time, but not till chairs, stools, etc., had been washed out, and the bread was floating round the oven.

Flooding has been a regular problem here over the years. In May 1924, after a big storm, water rushed down Butcher's Lane one and a half feet deep. In 1935, following the destruction by fire of the water mill the previous year, flooding destroyed the sluice gate and mill pond, so ending ice skating, swimming and boating on this stretch of the river. In 1939 the village centre was flooded again. After a very snowy winter, the big thaw in March 1947 flooded the White Hart and Post Office Stores when the River Box overflowed. In 1978 and again in 1988 a period of heavy rain led to flooding down Ash Street and Butchers Lane, threatening houses.

The major flash flood on the 13<sup>th</sup> May 2000, described locally as a "cloudburst", brought water lapping at the steps of houses in Ash Street beside the bridge and entered three of them. The water arrived in the village at 7pm following an intense storm over Groton 90 minutes earlier. It was reported that the water in the brook rose five feet at one place in half an hour. In Ash Street the water was six inches deep and in Butcher's Lane it flowed like a river. It escaped into Broad Street and flooded a 200 yard length of the street, lapping at the steps of The Fleece and finally escaping



into the River Box. The White Hart was flooded and needed new carpets throughout. The flow almost one foot deep down Ash Street escaped partly through Riddellsdell's garage, over Ellis Street, down The Causeway and through gardens into the river.

Since the flash flood of May 2000, when Fen Street, Ash Street, part of Broad Street and the White Hart were flooded, Babergh District Council and the Environmental Agency have improved water flow through the village watercourses so reducing the risk of flooding such as was experienced in homes and businesses in 2000. As a result a much less dramatic flood occurred in 2014. Our pictures indicate some of the premises mentioned in the 1888 article and a reminder of the 2000 flood.

*Tina Loose*



*The 1888 flood badly affected various buildings of The White Hart as it did again in 2000. This early 1900's picture shows the brewery, malt houses and outhouses which were flooded in 1888.*



*This early 1900's picture shows the slight gradient of Swan Street down to the river that enabled water from Groton to rush at great speed down the street. The surface was torn up.*



*The entrance to Butchers Lane in the early 1900's would have flooded in 1888. The buildings on the corner are part of a malt house (one of many in the village).*



*Mr Daniel Grimwood outside his shop in Stone Street about 25 years after his shop was flooded in 1888 when stock floated away. Mrs Spooner, the machinist that lost the trousers in the flood, lived next door.*



*Photos from 13<sup>th</sup> May 2000*

*Above: Ash Street looking towards Broad Street.*

*Left: Looking up Butchers Lane from Broad Street. (Photo: Jackie Iliffe)*

*Below: Floodwater escaping past the old gaol from Broad Street into the River Box. (Photo: Jackie Iliffe)*





# FEEDBACK FROM JAMES FINCH

## County Councillor for the Stour Valley

### New highways services arrive in Suffolk

Suffolk Highways' new partnership has been launched as Milestone Infrastructure and SCC join forces to deliver highways services fit for the future as from 1 October.

The new contract, which is worth in the region of £800 million - £1 billion, will deliver highway projects and improvements across Suffolk for up to 20 years, including maintaining roads, pavements and rights of way, improving drainage, hedge trimming, construction of new road schemes, snow-clearing and gritting and much more.

Milestone Infrastructure, part of M Group Services, was awarded Suffolk's new highways services contract back in February and since then has been working with SCC to mobilise the new contract.

### Statement on Haughley rail junction funding together with Ely Junction

On 4<sup>th</sup> October the Government has confirmed funding for upgrades to Haughley and Ely rail junctions. This has been a longstanding top priority for both SCC and Transport East. With the collective voice of our partnerships in the East of England this has been the reason why the Government has prioritised this investment over so many other investment needs within the UK.

When complete, this will ease congestion on our roads by increasing capacity of rail and enabling more container traffic to go by rail as well as provide a significant boost to the local economy.

### New and independent fire control centre gives the best deal for Suffolk

A new fire control centre fitted with state-of-the-art communications for mobilising and managing Suffolk's firefighters would be in the best interests of the county, a report to councillors says. Suffolk Fire and Rescue Service (SFRS) announced in June it would be withdrawing from the shared control room arrangement in place since 2011 with Cambridgeshire and Peterborough Fire and Rescue Service, based in Huntingdon.

The report was approved at SCC's Cabinet, on 12<sup>th</sup> September, stating that fire control would now be brought back into the county by the end of 2024.

However, the current system continues to mobilise the emergency response effectively, keeping Suffolk safe. But the new control room will forecast and coordinate SFRS resources based on risk modelling and new technology. This will ensure resources are deployed efficiently and effectively across the county, maximising fire engine availability, and improving response times. The new control room will coordinate resources out of hours to provide a swifter service to our most vulnerable residents.

An initial capital investment of £1.588m would be required for project delivery over three years. Additional revenue service of £1.615m annually will need to be provided to support the operating cost of the control room.

### Inflation, SEND school transport and care costs contribute to council's predicted overspend

Inflation, school transport for children with Special Educational Needs (SEND), and looking after children in care are the main factors for SCC forecasting to spend £22.3m over its £688.1m budget for this year.

This is a similar story for many councils across the country, due to higher demand for their services, inflation remaining higher than expected for longer, and interest rates rising to levels not forecast by financial markets.

Despite being able to publish a balanced budget in February, we are already having to spend more than we anticipated this year.

SCC is experiencing unexpectedly high demands on certain services, meaning some are spending disproportionately more than others. For example, costs for school transport and children in care make up two-thirds of the total overspend."

Details of the main areas of overspend are:

- School transport - forecast to overspend by £11.4m (39% of the overspend), with £8.3m of this being travel costs for children with special education needs and disabilities (SEND).
- Children in care - forecast to overspend by £8.2m (28% of the overspend). The council has a statutory responsibility to provide care for children and young people under the age of 18. Some of these have incredibly complex needs requiring 24-hour care from multiple carers. There is currently an unexpectedly higher number of children requiring this support, with this costing an average of £22,700 per week, per child.
- Adult care services - forecast to overspend by £3.5m (12% of the overspend) for purchasing care, due to increases in demand, and staffing costs in the sector. The fees paid for residential and nursing placements remain high with 64% of new residential and nursing packages being above the published rate of £806 per week, with some specialist packages being over £1,500 per week.
- Inflation - inflation and interest rates have been higher than experienced in a generation,

Despite these challenges, council departments continue to make savings. This year's budget identified £25.1m of savings to be made, and the latest figures show that £20m of this is projected to be achieved.

### Councils unite against National Grid pylon proposals for Norwich to Tilbury

In a joint letter to National Grid, the leaders of the three councils address the extensive impact on landscapes and local communities that the scheme would bring. They also highlight that an offshore solution has not been sufficiently investigated, and the opportunities that this could bring to co-ordinate with other large-scale energy projects off the region's coast. The Norwich to Tilbury project would see 114 miles of electricity pylons weave their way through the three counties. Only a small percentage of this cabling would go underground, an issue which the councils also raise, stating that more would be needed particularly in the Dedham Vale AONB, and near Diss and the Waveney Valley.

In summary the Councils we would expect National Grid to invest a lot more time and effort in working with our local communities. These large schemes can be guilty of doing the minimum necessary when they should be working with local people and businesses as much as possible, who know the area and can help find the best solutions, should the project go ahead.

National Grid held a second, non-statutory consultation, which closed on 21 August 2023. It is expected that a statutory consultation will take place in 2024.

### Powerful fostering film 'Any Of Us' launched in September 2023

SCC announces the launch of 'Any Of Us', a compelling fostering film that sends a universal message that anyone with the capacity to care can become a foster carer. The film spotlights three normal people demonstrating the caring qualities essential to becoming a foster carer. Their stories intertwine with Chloe's journey into fostering, creating the narrative that any of us can foster.

Fostering with your council or children's trust means supporting your community by offering safe, nurturing homes to children in need. This the link to the film: <https://bit.ly/scc-any-of-us>

If you are interested in becoming a foster carer request your free foster carer pack and find out about the training, support and allowances you can receive.

### Virtual Fostering and Adoption Sessions for the Stour Valley

A Foster Carer Recruitment Event is held the 1<sup>st</sup> Wednesday of every month, and an Adoption Event is on the 1<sup>st</sup> Thursday all 7:00pm in your home. To book a place please email [Claire.Gwatkin@suffolk.gov.uk](mailto:Claire.Gwatkin@suffolk.gov.uk).

James Finch

[james.finch@suffolk.gov.uk](mailto:james.finch@suffolk.gov.uk)

Tel: 01206 263649

Mobile: 07545 423796



## FEEDBACK FROM BRYN HURREN

### Babergh District Councillor for Box Vale Ward

At last a milestone has been reached with the acceptance by the planning inspector of the first part of the Council's Joint Local Plan (JLP) for Babergh Mid Suffolk. This hopefully will take us forward into the next ten years with some confidence that with a few amendments, we will be able to guide and defend these policies and not be overwhelmed by developer-led schemes that are more about financial gain for developer and landowner and less about what is desired and sustainable for the communities we serve and the available infrastructure already in place.

We had planned for 35% affordable homes for local residents and first time buyers/renters but have had to settle for 25% and were probably lucky to achieve that, given this government's 'Build, Build Build' policies that have not addressed local issues or actual need.

Also we will be subject to national policies that may dictate ruling on some issues such as solar farms across our countryside. Recently these have been allowed by government inspectors at appeal on good agricultural land despite protests by local councils and communities.

Babergh Mid Suffolk have always advocated solar panels on the roofs of our houses and large industrial buildings and the government steer on this has come as a bitter shock and will be to the detriment of home food production, tourism strategies and development and also our scenic pride and wellbeing.

We will I am sure continue to push for sensible local policies but may well be bullied into submission by bigger desires from our national government. We will see.

At the end of September I attended the national Lib Dem conference in Bournemouth as a delegate, this was a brilliant experience and I was very impressed with all our new MPs along with the those elected at last election who spoke with clear intentions and policies for every elector in this whole land. While we may not form the government of the day come the much needed general election, I do feel that we will have a large part to play in national politics after the election and anyone who votes for a Lib Dem MP and gains one to represent them will not be disappointed and will have a representative who champions the constituency they represent and work with integrity for the good of all, not personal gain for themselves and their cronies.

I do feel the day of reckoning is coming for those who have let us and our country down so badly and that proper due diligence in public office will be upheld by those we elect into the future. Revelations coming out of the pandemic enquiry and though the courts are truly shocking, even to a long term serving councillor like myself.

To put everyone's mind at rest, any candidate who stands under the Lib Dem bird of freedom logo, will have been rigorously vetted and will be sworn to represent all constituents with honesty, dedication, fairness and integrity towards public office without personal gain.

A very good statement of intent from candidates seeking to serve for all the right reasons.

Locally as your councillor, I work very long and hard to see that everyone's opinions are heard and represented to the best of my ability. It is important that we support all those around us and help where and when help is needed. We are desperately trying to help those in housing need with emergency and more permanent housing, we have persuaded some developers to transfer general affordable housing to local affordable housing, which has given us some more windfall sites to get local people on a housing ladder and a roof over their heads. The long term need for social and affordable housing is increasing month by month as the prices of buying and obtaining a mortgage is now beyond the reach of so many due to failed government policies and the trash budget. The answer is to stop the horrendous right-to-buy disaster and allow local councils to allocate land in specific acceptable places to once again build council houses for the next generation. Anyone in my area or further away, please come to look at Partridge Close or Station Field to see what can be done.

If there is nothing else on offer, the get-rich developers will pack up and go away and local building firms will be glad to build them to achieve good sustainable local development.

The cost of living crisis is also at its worst now and beginning to bite hard, we are directing those that we cannot help enough ourselves, to various agencies, foodbanks and the marvellous Citizens Advice, who are funded as much as we can afford, to guide and help these people on our behalf.

Being in debt and struggling by oneself or as a family is a terrible place to be and will impact on the wellbeing and mental health of many for a generation to come and will become a major issue for the next government and our now beleaguered but much valued NHS.

Maybe some of the maladministration cases going through our courts and enquiries will yield up monies and payback to the public purse to redress a little of so much that has gone wrong and has been inflicted onto those who did not deserve such hardship.

I hope that Babergh Mid Suffolk can continue to give help and hope where it is needed.

I will certainly, along with other members of the coalition administration, continue to strive to help where needed, with an aim to return the districts to relative stability and prosperity for all.

I will be attending all of my six parish councils during the month of November, so please feel free to come and put your point of view, there is always an agenda item for public comment, or contact me directly for help or just to give your opinion.

Keep warm and safe during the next month.

Bryn

[bryn.hurren@babergh.gov.uk](mailto:bryn.hurren@babergh.gov.uk)

Tel: 01787 210854 / Mobile: 07771 508348

## PARISH COUNCIL UPDATES

### EDWARDSTONE

#### Summary of Council Meeting 18<sup>th</sup> September 2023

**Present:** P Baker, M Gibson, T Wood, D Williams, L Smyth, J Morgan, R Jones (Clerk) B Hurren (Babergh DC)

**Apologies for Absence:** R Norman, J Finch (Suffolk CC)

**Minutes of the Meeting of 17 May 2023:** Approved. The clerk confirmed the purchase of a new laptop and replacement litter bin (War Memorial) and dog waste bin (Millenium Green).

**Financial Matters:** Statement of Finances & Orders for Payment and Q1 accounts were approved.

**Suffolk Wildlife Biodiversity Assessment:** To help formulate the environmental part of the neighbourhood plan, councillors approved for a biodiversity assessment to be carried out by Suffolk Wildlife Trust at a cost of £1,040 to be paid out of the CIL grant received from BDC. As this work was a 'specialist service' the council was not required to put the work put to tender, as defined in clause 11.1. ii. of the council's financial regulations.

**Climate Change:** Wildfires and Community Emergency Plan - Next meeting to take place on 19<sup>th</sup> Sept. Electric vehicle charging points - still waiting for SCC confirmation but it was looking positive.

**Defibrillator Update:** Cllr Morgan was carrying out monthly inspections and suggested that signs be put up around the parish to make people aware of the defibrillator. It was suggested that the White Horse would be a suitable site for a sign and an article should be placed in Box River News.

**Highway & Footpath Matters:** Footpath Cutting – councillors approved the offering of a 3-year footpath cutting contract to the council's current contractor, Garden Arbs. Contract to be subject to satisfactory performance, provision of up-to-date public liability insurance and payment rate per metre as per SCC contract rates.

**Footpath Leaflet** – Still awaiting feedback on the draft from SCC representative. Clerk to contact Cllr Finch to chase up.

cont...

**Bus Shelter Update:** As Cllr Wood had not received a response from the Air Cadets, it was agreed to invite some local young people to help as part of a community project to be held on 14<sup>th</sup> October 2023. Cllr Wood to source paint and materials.

**Date of next meeting:** Monday 20<sup>th</sup> November 2023 at 7pm

Full minutes can be found at:

<http://groton.onesuffolk.net/parish-council/documents/>

**Richard Jones**

01473 828246 / [grotonclerk@yahoo.com](mailto:grotonclerk@yahoo.com)

## BOXFORD

### Summary of Council Meeting 26<sup>th</sup> September 2023

**Meetings** - Meetings are held on the 4<sup>th</sup> Tuesday each month except in August & December. We now hold meetings in the village hall with a video link when requested. The usual start time is 7pm. Our next scheduled meeting is for Tuesday 24<sup>th</sup> October. As a one off, our meeting on 28<sup>th</sup> November will be held at an earlier time of 4pm. All are welcome to come along and observe and there is a regular public forum to allow a short time for residents to comment and raise items. If you are considering applying for one of our two parish councillor vacancies or take an interest in the village and want to support on-going projects why not come along, observe to see what is involved. All are welcome.

**Public Forum** - A resident raised observations about footpaths in need of attention near his home around Stone Street/Wash Lane. There was also a reminder on another footpath which is blocked from Roylands Lane. Cllr Wortley took details of these three issues and confirmed she would investigate and liaise with our footpath wardens. She confirmed that the issue near Roylands Lane was known and the owner had been waiting for the end of the bird nesting season to cut back the foliage. The Chair thought the permissive path along Stone Street had already been cleared, so Cllr Wortley agreed to check this. Attention then turned to Counsel's opinion sent to Babergh Planning about the fruit cages. The Chair had raised with our district councillor after the parish council had chased without response. A written complaint was agreed to the Chief Planning Officer. Another resident was concerned about the change of use of a property on Brook Hall Road to a foster home which was generating complaints about parking. Cllr Warren advised he had approached people at the property to try to encourage more considerate parking and he will monitor to see if this is achieved. Finally there were concerns about street lighting staying on all night at Station Field which is troubling some nearby residents. The first step would be to establish whether the management company were responsible for the lights and any plans for the county council to adopt them.

**Cemetery** - Cllrs Phillips and Warren gave reports about the progress of tree work in the churchyard and cemetery and plans to restore the churchyard boundary wall. Some calculations had been made regarding the future capacity in the cemetery for burials which was reassuring.

**On-going matters** - The Chairman had arranged a meeting with the supervisor of the community wardens which took place later that week. Cllr Munson suggested considering a bicycle rack for the centre of the village. Cllr Warren reported that the trees interfering with the power lines will be cut back. He then reported that the grit bins are due to be refilled soon, however, any located in non-adopted roads will not be filled. The Chair confirmed the bus survey was due to finish towards the end of the month. We can then analyse the evidence in relation to the protection of the village bus service. Cllr Munson was working with other parish councils on wildfire and emergency planning. On the latter they are fact finding for suitable venues in an emergency. The Reclaim The Rain project is gaining pace and reports to Box River News show initiatives such as willow plantation, working with village organisations, water butts etc. Cllr Munson reported that she attended a climate forum run by Suffolk

Association of Local Councils and both herself and Cllr Carpenter had been attending various events to network and gain knowledge to help with this new sub committee on the parish council.

#### **Sub-committees as follows:**

*Environmental & Ecology Sub-committee:* Cllrs Carpenter, Munson and Wortley.

*Public Realms Sub-committee:* Cllrs Parr (PC Chair), Warren and Watts.

*Chairman's Sub-group:* Cllrs Parr and Carpenter.

*Planning Sub-committee:* Cllrs Phillips, Watts and Wortley.

*Cemetery Sub-committee:* Cllrs Warren and Phillips.

*Finance Sub-committee:* Cllrs Parr, Phillips, Warren and the Responsible Finance Officer (clerk).

All decisions continue to be made by full council at parish council meetings held in public.

**Finance** - In addition to the usual business, both the Internal and External Audit Reports were reviewed. No matters came to the attention of the auditors giving any cause for concern, however, some recommendations were made by the internal auditor which this council is taking on board. The half year budget review was discussed. The parish council new website is now up and running - <http://boxford.suffolk.cloud> and there is a link from the community site. The parish council insurance was renewed. New bank signatory forms were completed. Good progress is being made with the restoration of the Jubilee seat. The finance sub-committee meeting had been set.

**County Council Report** - County Cllr J Finch attended and his report, issued in advance was as printed in the October issue of the BRN. County Cllr J Finch had chased the Boxford speed survey and received confirmation that the results were due on 29<sup>th</sup> September. Cllr Munson agreed to put details on the community facebook page relating to the virtual fostering and adoption sessions. Cllr Munson was concerned that the drains were not being cleared which resulted in water pouring down School Hill and into the school during a heavy downpour in August. The Chairman confirmed the drains and gullies were included in the number of issues he had been chasing. Once they are done, the importance of a regular maintenance program going forward was stressed. The Chairman raised other issues of grass verge cutting, debris in the middle of the road on Butchers Lane and yellow lining for the Church Street pinch point. With residents parking opposite the churchyard boundary wall on Church Street, insufficient space is left for large vehicles including buses. The Chairman asked for the support of County Cllr J Finch towards these matters and also potential Quiet Lane designations.

**Planning** - A number of planning applications were discussed, details on which can be found on the parish council website.

Full minutes can be found at: <http://boxford.suffolk.cloud>

**Debbie Hattrell**

01376 425744 / [pc@boxford.suffolk.gov.uk](mailto:pc@boxford.suffolk.gov.uk)

## OTHER PARISH COUNCILS

### **Groton PC**

Clerk: Richard Jones - 01473 828246

[grotonclerk@yahoo.com](mailto:grotonclerk@yahoo.com)

<http://groton.onesuffolk.net/parish-council/documents/>

### **Little Waldingfield PC**

**Chris White Councillor & Clerk** - 07541 133535

[clerk.littlewalingfieldpc@hotmail.co.uk](mailto:clerk.littlewalingfieldpc@hotmail.co.uk)

<https://bit.ly/LW-parish-minutes>

### **Newton Green PC**

**Dave Crimmin PSLCC** - 01787 375085

[clerk@newton-pc.gov.uk](mailto:clerk@newton-pc.gov.uk)

[www.newton.onesuffolk.net](http://www.newton.onesuffolk.net)



## BOXFORD & DISTRICT BOWLS CLUB

We are now well into autumn and all our bowling is inside and no longer outside. So we look back to bowling news at the end of the season in August/September.

Huge congratulations to Mike Billington, Mary Dallas and Lesley Cook for winning the STL Triples competition. This is an open competition that took place throughout the season with players from other clubs around the region. Well done!

We had our Club Finals Day in August, and our president George Bullett presented the trophies to the winners. Below are photos of some of the winners and I will put the other winners in the next newsletter, so watch out for those.



Left:  
Mixed Pairs –  
Margaret Blakebrough  
and Gary Whiteman

Right:  
Gents 2 wood Singles,  
Gents 4 wood Singles  
and Club Singles –  
Glen Loe



Left:  
Gents Pairs – George  
Bullett and Malcolm  
Grimwood

Right:  
Monday Morning  
League –  
Alan Clark,  
Mike Billington  
(captain),  
Roz Mortlock,  
Ian Whipps,  
Anthea Holden,  
Jerry Zoers



Have a great Indoors season everyone if you are playing, and if you are not, then enjoy the rest over the next few months.

## SEASONAL EVENT SUCCESS FOR STOKE LADIES

With the weather turning slightly cooler and the leaves beginning to turn colour, Stoke by Nayland Ladies held their autumn meeting. Playing for the Specialist Shield, the main event was held over an 18 hole Stableford on the Constable Course in the morning, followed by a fun 9 hole Greensomes event on the Gainsborough Course in the afternoon.



The Autumn Meeting winner Jill Pottle with the Specialist Shield.

After the golf, all players enjoyed a dinner and presentation, with a raffle raising money for the Ladies Captain's charity.

Winners of the day were:

1 <sup>st</sup>	Jill Pottle	37pts
2 <sup>nd</sup>	Lesley Hitchcock	36pts on count back
3 <sup>rd</sup>	Catriona Chaplin	36pts
4 <sup>th</sup>	Lesley Munro	35pts

Best back 9 - Anne Hemings 20pts on count back

Best front 9 - Hilary Cairns 18pts

### Nearest the pins

8 <sup>th</sup> Constable	Sue Gregory
13 <sup>th</sup> Constable	Edel Rew

The afternoon 9 hole Greensomes

1 <sup>st</sup>	Suzanne Shaw-Smith & Catriona Chaplin	19pts on count back
2 <sup>nd</sup>	Bev Ellender and Liz Kiddy	19pts

## MILDEN CRICKET CLUB

Following the end of the 2023 season, a club social/awards evening is being arranged for Friday 1 December. Details, including the venue, to follow in next month's BRN and will be circulated to all club members and those who played in 2023.

## LITTLE WALDINGFIELD PARISH ROOM AVAILABLE FOR HIRE

at Competitive Rates

for: Meetings, (Children's) Parties, Functions  
Fitness & Other Classes, Fund Raising Coffee Events

Kitchen facilities  
Disabled access ramp available

Contact:

**Sue Bowen 07962 210 359**  
**[sd.bowen@btopenworld.com](mailto:sd.bowen@btopenworld.com)**



# The Blooming Garden

## Taste in Flowers.

Gardeners can be very snobbish about the sort of flowers they will allow into their gardens. It is very strange that something as beautiful as a flower can be considered vulgar, but taste in plants changes and many plants that our parents grew fell out of favour. Victorians loved using annuals as carpet bedding; it showed that



Bedding plants

they could afford large, heated greenhouses and many gardeners. When these flowers became popular with the masses, their bright colours were seen as vulgar. Most gardeners now shrink in horror at the idea of red salvias grown with French marigolds or pink Busy Lizzies.

At a time when Gertrude Jekyll was introducing gardeners to the idea of using colour to create pleasing schemes, plant snobism became rife, this was a time when not only plants, but a whole colour could be condemned as vulgar. Most gardener writers at this time spoke about magenta as if the very presence of such a colour would contaminate the whole garden; Jekyll wrote about 'malignant magenta' and Bowles called it 'that awful form of original sin'. This is very odd when one considers that the very word was only coined in 1860 after the Battle of Magenta which took place in 1859. I am not sure what the colour was called before the invention of this artificially produced dye. I can find no reference to it in earlier garden writing. Jekyll was writing at a time when adherents of the Arts and Crafts movement were advocating a return to nature. Magenta was associated with industrialisation and the availability of artificially produced dyes for textiles that were cheap; the dye was arsenic based and it was only a short time ago that people had been poisoned by arsenic in the green dye in their wallpapers and clothes. The aversion to magenta in flowers, although illogical continued for decades.

In the 1970s and 1980s people were averse to any bright colours in the garden, and were very careful to grow only pastel shades and silver foliage. I know several people who still refuse to allow yellow

into the garden, unless it is foliage and called gold. Gradually, stronger colours have been reintroduced and become acceptable, but I'm not sure to what extent magenta has been welcomed back into the fold. Vita Sackville West was not afraid to use it in her purple border and in fact it is magenta which really makes the purple bed zing. I love this clump of *Geranium psilostemon* right in the middle of the bed.



*Geranium psilostemon*

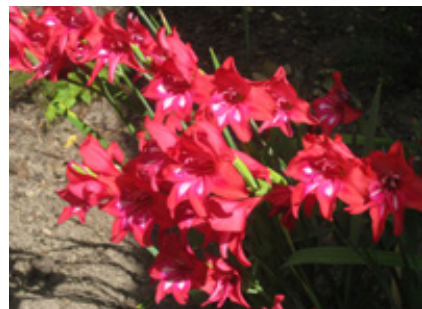
So taste in flowers changes over time and even if we think we are immune to fashion it is difficult not to be influenced by what everybody else is growing. A while ago, everybody wanted their garden to look like a North American prairie and now 'rewilding' is the buzzword and people are falling in love with weeds.

I am afraid that I do have a list of disliked plants; I don't think it is anything to do with fashion and I do regularly revisit my prejudices and try to look with fresh eyes at the objects of my dislike. Please do not be offended if my list contains plants that you love, this is all very subjective.



## Less loved plants.

**Gladioli.** To me they are just too Dame Edna Everage, but I didn't like them before Dame Edna started throwing them at her audience; horrid great spiky things. But the little species ones such as *Gladiolus nanus* are lovely. And who could dislike the adorable *Gladiolus robinetta*?



*Gladiolus robinetta*

**Hemerocallis.** I can't understand why people, especially Americans love Day Lilies so much. They actually belong to the family *Xanthorrhoeaceae* and they are not lilies at all. It is true that each flower only lasts a day and that is quite long enough and they look like used paper tissues as they fade. Many of them are over-hybridised and vulgar and don't get me started on their names. There is an English one called 'Droopy Drawers', but even worse is an American one named after an article of underwear that I don't care to mention here. And how can you grow something called 'Big Honking French Kisses' or 'Kissy Poo'? I am a serious gardener and I can't imagine inviting gardening friends to come and look at my 'Droopy Drawers'.

**Hydrangeas.** I always hated them. I associated them with bungalows in seaside towns. I hate the wishy-washy way that many of them can't decide whether to be pink or blue. But I have overcome my aversion when it comes to forms of *Hydrangea paniculata*, so this dislike is not set in stone.

**Dahlias.** My grandmother grew these in serried rows and was very proud of their enormous size and brilliant colours. I hated them as a child because of their smell and the earwigs which were always hidden in their petals. In fact dahlias had been out in the cold for years until 'The Bishop of Llandaff' became respectable even though it has bright red flowers. The secret was it had brown leaves instead of green and that somehow made it acceptable. The vagaries of fashion are sometimes weird. Anyway, the dahlia has now been reinstated as a result of the 'exotic garden' which became popular a few years ago. Dahlias are easy to grow from seed and bloom the first year so they are now very welcome in my garden.



Above: *Hypericum*

Right: *Leycesteria formosa*

I have some prejudices which I can't overcome, but lack of space means I can't



expand too much on my dislike of *Spiraea japonica*

'Goldflame'; pink flowers with yellow leaves-yuck! Ubiquitous shrubby *Hypericum* with buttery yellow flowers should be lovely but gives me the shivers. I loathe the red Hot Poker *Kniphofia* 'Atlanta' or horror of horrors; don't get me started - *Leycesteria formosa*.

I am sure I'm not the only gardener to have an irrational dislike of certain plants, but we can't all love the same things and I am sure many people hate some of my dearest treasures.

*Chloris.*



# DIRECTORY OF CLUBS & ORGANISATIONS

## CLUBS & GROUPS

Boxford Bellringers	<i>Richard Gates</i>	<b>01787 210432</b>
Boxford Bible Study Group	<i>Peter &amp; Margaret</i>	<b>01787 211077</b>
Boxford Bike Club	<i>Kevin Bridge</i>	<b>07876 798617</b> <a href="http://www.boxfordbikeclub.co.uk">www.boxfordbikeclub.co.uk</a>
Boxford Bowls Club	<i>Lea Blackham</i>	<b>01787 210313</b>
Boxford Carpet Bowls	<i>Brian Porter</i>	<b>01473 824283</b>
Boxford Drama Group	<i>Janice Macmillan</i>	<b>07779 303690</b> <a href="mailto:janice.macmillan@yahoo.co.uk">janice.macmillan@yahoo.co.uk</a>
Boxford Friendship Group	<i>Alison Warren</i>	<b>01787 211067</b>
	<i>or Wendy Hills</i>	<b>01787 210342</b>
Boxford Gardens Open	<i>Audrey Zuck</i>	<b>07852 102 455</b> <a href="mailto:audrey@a2zriskservices.com">audrey@a2zriskservices.com</a>
Boxford Gardening Society	<i>Elizabeth Wagener</i>	<b>01787 210223</b> <a href="mailto:elizabeth.wagener@btinternet.com">elizabeth.wagener@btinternet.com</a>
Boxford Literary Group	<i>David Jones</i>	<b>01787 211104</b> <a href="mailto:audav@hotmail.co.uk">audav@hotmail.co.uk</a>
Boxford Rovers Youth FC	<i>Melvyn Eke</i>	<b>07873 971701</b> <a href="mailto:m.eke@btinternet.com">m.eke@btinternet.com</a>
<a href="http://www.boxfordrovers.co.uk">www.boxfordrovers.co.uk</a>		
Boxford Tennis Social	<i>Sue Moore</i>	<b>07808 481447</b>
Boxford WI	<i>Lyn Beer</i>	<b>07961 357526</b>
Edwardstone Cricket Club	<i>Tom Whymark</i>	<b>01787 211375</b>
Fleece Jazz	<i>David Gasson</i>	<b>01787 210796</b>
Highway 12 Western Partner Dance	<i>Chris</i>	<b>01787 371006</b>
Little Waldingfield History Society	<i>Diana Langford</i>	<b>01787 248298</b> <a href="mailto:dianalangford765@gmail.com">dianalangford765@gmail.com</a>
Little Waldingfield Over 60s and Friendship Club	<i>Tricia Eddington</i>	<b>01787 247932</b>
Local History Recorder Edwardstone	<i>Daphne Clark</i>	<b>01787 210698</b> <a href="mailto:daphne.clark@btopenworld.com">daphne.clark@btopenworld.com</a>
Local History Recorder Groton	<i>Joanna Roberts</i>	<b>01787 210619</b> <a href="mailto:jgant87618@aol.com">jgant87618@aol.com</a>
Madrigalia Choir	<i>Sue Price</i>	<b>01787 210913</b>
Miss Lesley School of Performing Arts (MLSPA)	<i>Miss Lesley</i>	<b>07957 351941</b> <a href="mailto:lesley.mlspa@gmail.com">lesley.mlspa@gmail.com</a>
Milden Cricket Club	<i>Andrew Simmons</i>	<b>07951 055643</b>
Milden Singers	<i>Pearl</i>	<b>01449 741876</b>
Newton Arts & Crafts Club	<i>Carol Langley</i>	<b>01787 373548</b>
Newton War Games Club	<i>Brian Lawson</i>	<b>01787 312160</b>
Newton Fireside Club	<i>Moir Evans</i>	<b>01787 374652</b>
Primrose Wood Volunteers	<i>Evan Flockhart</i>	<b>07968 336883</b> <a href="mailto:obliquewoodland@protonmail.com">obliquewoodland@protonmail.com</a>
Swing jive & Lindy Hop Dance	<i>Sarah Boldock</i>	<b>07956 614824</b>
Yoga (Boxford)	<i>Marianne Marshall</i>	<b>01787 210323</b>
Yoga Paper Kite (Newton)	<i>Sophie</i>	<b>01787 313662</b>
Yoga With Lindsey (Newton)	<i>Lindsey</i>	<b>07971 800540</b>

## CHARITIES

Boxford & Groton United Charities	<i>Guy Godfrey</i>	<b>01787 211378</b>
Edwardstone Millennium Green Trust	<i>Marijke Morris</i>	<b>07914 767013</b> <a href="mailto:marijke_e@yahoo.co.uk">marijke_e@yahoo.co.uk</a>
Edwardstone United Charities	<i>Nick Raymond</i>	<b>01787 210461</b> <a href="mailto:ncraymond@hotmail.co.uk">ncraymond@hotmail.co.uk</a>
Groton Educational Foundation	<i>Stephen Watkins</i>	<b>01787 210977</b> <a href="mailto:stephen_watkins49@yahoo.co.uk">stephen_watkins49@yahoo.co.uk</a>
Groton Winthrop Mulberry Trust	<i>James Wills</i>	<b>01787 210484</b>
Little Waldingfield Charities	<i>Mary Thorogood</i>	<b>01787 247658</b>
Newton Green Trust	<i>Philip Taylor</i>	<b>01787 211265</b> <a href="mailto:philiptaylor433@gmail.com">philiptaylor433@gmail.com</a>

## COMMUNITY GROUPS

3PR Boxford 1st Responders	<i>Rich Wild</i>	<b>01787 210946</b> <a href="mailto:office@boxfordresponders.com">office@boxfordresponders.com</a>
Boxford Allotments	<i>Karen Coleman</i>	<b>07970 945646</b>
Boxford Bounty	<i>Mark Miller</i>	<b>01787 211596</b>
Boxford Community Car Scheme	<i>Jen Eastwood</i>	<b>01787 211853</b> <a href="mailto:jen.eastwood8@gmail.com">jen.eastwood8@gmail.com</a>
Boxford Community Council	<i>Ward Baker</i>	<b>01787 210129</b> <a href="mailto:boxfordcommunitycouncil@gmail.com">boxfordcommunitycouncil@gmail.com</a> <a href="http://www.boxford.me.uk">www.boxford.me.uk</a>
Boxford Playing Fields	<i>Hugh Phillips</i>	<b>01787 211729</b> <a href="mailto:hughvcphillips@hotmail.com">hughvcphillips@hotmail.com</a>
Boxford Society	<i>Jen Eastwood</i>	<b>01787 211853</b> <a href="mailto:jen.eastwood8@gmail.com">jen.eastwood8@gmail.com</a> <a href="http://boxfordsuffolk.com/boxfordSociety">boxfordsuffolk.com/boxfordSociety</a>
Boxford Tennis Courts	<i>Yvonne Woodfield</i>	<b>01787 210151</b>
Lt Waldingfield Playing field	<i>Jennie Jordan</i>	<b>07522 352558</b> <a href="mailto:52Jennie1@gmail.com">52Jennie1@gmail.com</a>

## SCOUTING

1st Boxford Beaver Scouts	<i>Not currently active</i>	
1st Boxford Cub Scouts	<i>Jo Colclough</i>	<b>07798 765419</b>
1st Boxford Scouts	<i>David Talbot-Clarke</i>	<b>07946 550519</b>
1st Boxford Explorer Scouts	<i>Neil Barkham</i>	<b>07734 108257</b>
1st Boxford Rainbows	<i>Janice Macmillan</i>	<b>07779 303690</b>
1st Boxford Brownies	<i>Janice Macmillan</i>	<b>07779 303690</b> <a href="mailto:janice.macmillan@yahoo.co.uk">janice.macmillan@yahoo.co.uk</a>
1st Boxford Guides	<i>Bethany Ireland</i>	<a href="mailto:bethanyireland11@gmail.com">bethanyireland11@gmail.com</a>

## CHILDREN FAMILIES & LEARNING

Boxford Primary School	<b>01787 210332</b> <a href="mailto:office@boxford.suffolk.sch.uk">office@boxford.suffolk.sch.uk</a> <a href="http://www.boxford-suffolk.secure-dbprimary.com">www.boxford-suffolk.secure-dbprimary.com</a>
Friends of Boxford School (FoBS)	<a href="mailto:talktofobs@gmail.com">talktofobs@gmail.com</a>
Sunflowers Childcare <a href="http://www.sunflowers-childcare.co.uk">www.sunflowers-childcare.co.uk</a>	<i>Moir Grant</i> <b>01787 211363</b> <a href="mailto:info@sunflowers-childcare.co.uk">info@sunflowers-childcare.co.uk</a>
Boxford Baby & Toddler Group	<a href="https://facebook.com/Boxfordbabyandtoddlergroup">facebook.com/Boxfordbabyandtoddlergroup</a>

## HALLS & FACILITIES TO HIRE

Boxford Pavilion	<i>Hugh Philips</i>	<b>01787 211729</b> <a href="mailto:hughvcphillips@hotmail.com">hughvcphillips@hotmail.com</a>
Boxford Spinney	<i>Mark Miller</i>	<b>01787 211596</b> <a href="mailto:mark.miller@talktalk.net">mark.miller@talktalk.net</a>
<a href="http://www.boxfordspinney.co.uk">www.boxfordspinney.co.uk</a>		
Boxford Village Hall	<i>Jane Elliott</i>	<b>07721 880521</b> <a href="mailto:BVHbookhall@gmail.com">BVHbookhall@gmail.com</a>
Edwardstone Parish Hall	<i>Daphne Clark</i>	<b>01787 210698</b> <a href="mailto:daphne.clark@btopenworld.com">daphne.clark@btopenworld.com</a>
Edwardstone Millennium Green	<i>Marijke Morris</i>	<b>07914 767013</b> <a href="mailto:marijke_e@yahoo.co.uk">marijke_e@yahoo.co.uk</a>
Groton Village Hall	<i>Joanna Roberts</i>	<b>01787 210619</b>
Little Waldingfield Parish Room	<i>Sue Bowen</i>	<b>01787 249473</b> <a href="mailto:sd.bowen@btopenworld.com">sd.bowen@btopenworld.com</a>
Little Waldingfield Pavilion	<i>Jennie Jordan</i>	<b>07522 352558</b> <a href="mailto:52Jennie1@gmail.com">52Jennie1@gmail.com</a>
Marquee Booking	<a href="mailto:BoxfordMarqueeBooking@gmail.com">BoxfordMarqueeBooking@gmail.com</a>	
Milden Pavilion	<i>Pearl</i>	<b>01449 741876</b> <a href="mailto:info@mildenpavilion.co.uk">info@mildenpavilion.co.uk</a>
Newton Village Hall	<i>Alan Vince</i>	<b>07955 199000</b>



T: 01787 211839 M: 07823776005

E: [info@jarvisbuildingcontractorsltd.co.uk](mailto:info@jarvisbuildingcontractorsltd.co.uk)

## FOR ALL TYPES OF BUILDING / LANDSCAPING NEEDS

- ♦ NEW BUILDS
- ♦ EXTENSIONS
- ♦ RENOVATIONS
- ♦ FLINT & STONE WORK
- ♦ KITCHEN & BATHROOM INSTALLATION
- ♦ DESIGN & PLANNING
- ♦ ALL INSURANCE PROJECTS
- ♦ ELECTRICS & PLUMBING
- ♦ LANDSCAPING
- ♦ DECORATING SERVICE ECT...

## MICROPLANT

08703 210256 / 07850 210256

E-mail: [charles@microplant.net](mailto:charles@microplant.net)

Website: [www.microplant.net](http://www.microplant.net)

Hire, Sales, Servicing & Repairs of  
Compact Tractors, Mini Loaders  
Fencing, Landscaping &  
Paddock Maintenance Machinery

Mini Tractors  
Loaders  
Rough terrain forklift  
Skidsters  
Mini Diggers  
Post Hole Borers  
Hyd' Post Drivers  
Trenchers  
Rotavators  
Stoneburiers  
Power Rakes  
Harrows  
Mowers  
Associated equipment



Hydraulic post driver—either centre  
mounted or offset behind tractor. Also  
available mounted on Weidemann loader



## Woodlands Nursery

Set in the beautiful surroundings of  
Kersey Mill. We offer outstanding care  
and education from 11 months to 4 years.

Forest School Sessions within our enchanting  
garden help forge a love of the outdoors while  
sing & sign classes further develop your child's  
communication and independence.

Children will make cherished memories with  
lasting respect for each other and  
the environment.



Toddler Group &  
Weekly Baby Classes  
also running term time



[WWW.WOODLANDSNURSERYKERSEYMILL.CO.UK](http://WWW.WOODLANDSNURSERYKERSEYMILL.CO.UK)



# EVENTS CALENDAR

## OCTOBER 2023

<b>21-22</b> SAT-SUN	<b>Formal Lantern Making Workshop</b> Boxford Spinney	10-4pm
<b>23-26</b> MON-THU	<b>Informal Lantern Making Workshop</b> Boxford Spinney	10-4pm
<b>23</b> MON	<b>Boxford Friendship Group</b> Boxford Village Hall	2-4pm
<b>24</b> TUE	<b>Fireside Club - Film Show 'Lion'</b> Newton Village Hall	2pm
<b>27</b> FRI	<b>Pop up pub</b> Little Waldingfield Pavilion	6:30-10:30pm
<b>28</b> SAT	<b>Charities Trustees Coffee Morning</b> Newton Village Hall	10-11:30am
<b>28</b> SAT	<b>Boxford Farmers, Arts &amp; Crafts Market</b> Boxford Village Hall	10-1pm
<b>28</b> SAT	<b>Boxford Fireworks &amp; Lantern Parade</b> Boxford	6:30pm

## NOVEMBER 2023

<b>1</b> WED	<b>Boxford WI - Competition/Quiz</b> Boxford Village Hall	2pm
<b>2</b> THU	<b>Edwardstone Christmas Fair</b> Edwardstone Church	6-9pm
<b>3</b> FRI	<b>Edwardstone Christmas Fair</b> Edwardstone Church	9-2pm
<b>4</b> SAT	<b>Leavenheath Cinema - Allelujah</b> Leavenheath Village Hall	7pm
<b>5</b> SUN	<b>Nayland Bonfire &amp; Fireworks</b> Nayland Village Hall	6:15pm
<b>6</b> MON	<b>Edwardstone Neighbourhood Plan Exhib</b> Edwardstone Parish Hall	1-8pm
<b>7</b> TUE	<b>Fireside Club - Talk by Sue Tibbetts</b> Newton Village Hall	2pm
<b>3</b> TUE	<b>Boxford Gardening Society AGM &amp; Social</b> Boxford Village Hall	7:30pm
<b>10</b> FRI	<b>Polstead Films - O Brother, Where Art Thou?</b> Polstead Village Hall	7pm
<b>11</b> SAT	<b>Wine Tasting</b> Little Waldingfield Parish Room	7:30pm
<b>15</b> WED	<b>LWHS - Scott's Polar Expedition</b> Parish Room, Little Waldingfield	7:30pm
<b>17</b> FRI	<b>Relaxation &amp; Sound - all welcome</b> Boxford Village Hall	6-7:15pm
<b>17</b> FRI	<b>An Evening With The Mildens Singers</b> Mildens Pavilion	7pm
<b>18</b> SAT	<b>Boxford Farmers, Arts &amp; Crafts Market</b> Boxford Village Hall	10-1pm
<b>18</b> SAT	<b>Christkindlmarkt Christmas Market</b> Preston Manor Barn	10-3pm
<b>18</b> SAT	<b>Christmas Craft &amp; Charity Fair</b> The Old School, Long Melford	10-3pm
<b>18</b> SAT	<b>French's Care Haven Quiz Night</b> The Ansell Centre, Hadleigh IP7 5DL	7pm
<b>21</b> TUE	<b>Fireside Club - Famous Places Quiz</b> Newton Village Hall	2pm
<b>22</b> WED	<b>Whist Drive</b> Monks Leigh Village Hall Meeting Room	7pm
<b>25</b> SAT	<b>Psychic Mediumship &amp; Psychic Drawing</b> The Stevenson Centre, Gt Cornard, CO10 0WD	7pm
<b>27</b> MON	<b>Boxford Friendship Group</b> Boxford Village Hall	2-4pm

<b>29-30</b> WED-THU	<b>Boxford Drama Group - Puss In Boots</b> Boxford Village Hall	7pm
-------------------------	--	-----

## DECEMBER 2023

<b>1</b> FRI	<b>Festive Pop up pub</b> Little Waldingfield Pavilion	6:30-10:30pm
<b>1-2</b> FRI-SAT	<b>Boxford Drama Group - Puss In Boots</b> Boxford Village Hall	7pm
<b>2</b> SAT	<b>Chelsworth Christmas Fair</b> All Saints Church, Chelsworth	11-4pm
<b>2</b> SAT	<b>Cheese &amp; Wine Evening</b> Groton Village Hall	7:30pm
<b>3</b> SUN	<b>Christmas Fair</b> Polstead Village Hall	TBC
<b>5</b> TUE	<b>Fireside Club - CAB Christmas Music</b> Newton Village Hall	2pm
<b>8</b> FRI	<b>Christmas Concert Madrigalia &amp; Strings</b> St Mary's Church, Boxford	7:30pm
<b>9</b> SAT	<b>Christmas Coffee Morning &amp; Festive Stalls</b> All Saint's Church, Newton	10-11:30am
<b>10</b> SUN	<b>Christmas Tree Festival &amp; Village Fair</b> St Mary's Church & Boxford Village Hall	10-4pm
<b>13</b> WED	<b>LWHS - Dad's Army</b> Parish Room, Little Waldingfield	7:30pm
<b>15</b> FRI	<b>Fireside Club - Christmas Lunch</b> The Saracens Head	12noon
<b>15</b> FRI	<b>Relaxation &amp; Sound - all welcome</b> Boxford Village Hall	6-7:15pm
<b>19</b> TUE	<b>Fireside Club - Christmas Flowers Workshop</b> Newton Village Hall	2pm



# Services Directory



**Green Eye Gardens**  
Garden design, creative planting & landscaping

Francesca Green  
Tel: (01787) 210507

[www.greeneyegardendesign.co.uk](http://www.greeneyegardendesign.co.uk)  
[info@greeneyegardendesign.co.uk](mailto:info@greeneyegardendesign.co.uk)

## AK SMITH PLASTERING

Established 1986

CEILINGS, WALLS, FLOORS  
LIME PLASTERING  
PLASTER BOARDING, COVING

**NO JOB TOO SMALL**

MOBILE: 07808 027 116

Based in Assington



Email: [aksmithplastering@hotmail.co.uk](mailto:aksmithplastering@hotmail.co.uk)

Website: [www.aksmithplastering.com](http://www.aksmithplastering.com)



**Topcoat**

Painting & decorating  
Interior & exterior

For free quote  
call David on  
07519 589256

## Scents Of Life

CPTG Essential Oils,  
Sound, Relaxation, Support & Clarity  
For whatever you are experiencing



**Louise Carpenter**  
whole being well-being

One to one appointments by donation  
Monthly reset and sound groups  
[louisecarpenter@gmx.co.uk](mailto:louisecarpenter@gmx.co.uk)  
01787 211862



**TRACEY PARR**  
Independent Travel Agent

07747 608 509

[tracey@boxrivertravelboutique.co.uk](mailto:tracey@boxrivertravelboutique.co.uk)



## ROBSON THATCHING

FREE ADVICE  
RE-THATCHES  
PATCHING  
REPAIRS

Over 25 years experience

56c High Street, Lavenham

01787 247 964 or 07443 596 757  
[philiprobson2011@hotmail.co.uk](mailto:philiprobson2011@hotmail.co.uk)



## Kirkham Sheidow Architects



Boxford 01787 211670

[design@kirkhamsheidow.co.uk](mailto:design@kirkhamsheidow.co.uk)

[www.kirkhamsheidow.co.uk](http://www.kirkhamsheidow.co.uk)

**Ellie's**  
Grooming Parlour



Tel: 07473 638660

Email: [hello@elliesgroomingparlour.co.uk](mailto:hello@elliesgroomingparlour.co.uk)

Reliable, Qualified & Caring Dog Groomer at Kersey Mill

**W.A. Deacon**

FUNERAL SERVICES

24 HOUR

TELEPHONE SERVICE

01787 248282 & 01787 248147

Norman Way, High Street, Lavenham,  
Sudbury, Suffolk CO10 9PY

INDEPENDENT FAMILY COMPANY



ESTABLISHED 1952

## Samuel P. D. Morgan

Woven Willow Fencing  
& Hedgelaying



Sudbury, Suffolk.

07772 398310

[samuelpdmorgan@gmail.com](mailto:samuelpdmorgan@gmail.com)

## PADDOCK AND MEADOW CUTTING & HARROWING SERVICE

Small Tractor 6' Topper  
12' Grass Harrow  
01787 210842

Polstead Based  
**Country Cars**  
Private Hire



Local and Long Distance  
Airports - Theatres  
Restaurants - Weddings

Contact: Dave Howard  
Mobile: 07767 076976

## PAUL MACHIN GARDEN SERVICES

General maintenance, hedge cutting,  
tree pruning, grass cutting,  
scarifying service  
Paddock & field topping  
Wood chipper & operator hire  
Patio, path and driveway cleaning  
Garden, house & shed rubbish  
clearance

Environment agency waste carriers  
licence held and fully insured  
Please call me on 01787 249725 or  
07854 725777

and find my page on facebook



## STIRLING PAINTERS & DECORATORS

THIS FATHER AND SON TEAM BETWEEN  
THEM HAVE 60 YEARS EXPERIENCE IN THE  
TRADE, WOULD LIKE TO GIVE YOU A FREE  
ESTIMATE FOR EXTERNAL AND INTERNAL  
REDECORATION OF YOUR PROPERTY  
WE DO NOT USE SUB-CONTRACT LABOUR  
WE ONLY USE THE BEST MATERIALS  
WE TREAT YOUR PROPERTY  
AS IF IT WAS OUR OWN  
WE ARE PROFESSIONALS

TEL: 01255 688104 MOBILE: 07866 734519



# Services Directory

**S B Electrical**  
For all your electrical work

Free Estimates ✓ No Call Out Charge ✓  
Part 'P' Registered ✓ Electrical Certificates Issued ✓

**01787 247043**  
email: [info@sbelectrical.biz](mailto:info@sbelectrical.biz)  
or visit [www.sbelectrical.biz](http://www.sbelectrical.biz)

**Boxford Lane Joinery**  
With the benefit of over 40 Years experience

*Specialist Manufacturers and Installers of Bespoke:*  
*Kitchens*  
*Wardrobes and Household Furniture*  
*Staircases • Architectural Joinery*  
*Windows, Doors and Conservatories.*  
*All finished/Sprayed/Polished*  
*in House if required.*  
*A full fitting and Carpentry service*  
*is also available.*

**Contact: Greg Deeks: 01206 263525**  
**or mobile: 07977 738 649**  
**or Brett Deeks: 07969 524 124**

email: [BoxfordLaneJoinery@gmail.com](mailto:BoxfordLaneJoinery@gmail.com)

**BUSINESS OWNER?**  
**WHY AREN'T YOU IN THE**  
**BOX RIVER NEWS DIRECTORY?**

The Box River News is the go-to reference for thousands of people across South Suffolk for trade services.

**Ensure you contact us to boost your business for a ridiculously low cost.**

Now with free online business directory listing: turbo-charge your SEO rankings!

**01787 210946**  
[editor@boxrivernews.com](mailto:editor@boxrivernews.com)

**OPTIMUM**  
Architecture Ltd

**Architectural Services**

including Listed and Low Energy Buildings


**01206 262697**

[www.optimum-architecture.co.uk](http://www.optimum-architecture.co.uk)

**D MAY**  
Plumbing & Heating

Offering a fully comprehensive range of domestic plumbing and heating services.  
Local tradesman 30 years experience  
Free estimates not VAT registered.  
New bathroom and ensuite installations including floor/wall tiling.  
Emergency service provided and no job too small.  
Tel: 01473 829064 or Mobile: 07886 389 995

 **LILAC SAGE FLOWERS**  
Florist

Local florist specialising in sustainable methods. Flowers & gifts for all occasions including birthdays, weddings, funerals & events.

Telephone: 07884 393 010  
[LilacSageFlowers@gmail.com](mailto:LilacSageFlowers@gmail.com)  
[www.facebook.com/lilacsageflowers](http://www.facebook.com/lilacsageflowers)

 **COMMAND PEST CONTROL**  
Established 1986



Locally based, professional Pest Control company. Offering complete solutions for:

- Rats ➤ Mice ➤ Wasps ➤ Ants
- Moles ➤ Woodworm ➤ Fleas
- Rabbits ➤ Feral Pigeons ➤ Squirrels

All enquiries welcome from one off pest problems, to servicing contracts for year round protection.

**Call (01787) 248049**  
[www.commandpestcontrol.co.uk](http://www.commandpestcontrol.co.uk)

**SAM'S K9 Services**

Experienced dog walker and trainer, good rate, fully insured, qualified and have my first aid for dogs.

Not only am I a dog walker but I'm also a qualified dog trainer. I'm able to help with a wide range of behavioural and training issues. My methods of training are up to date and force free. Whether you need help as a first time puppy owner, or your dog is showing signs of aggression or you need help with training problems such as lead pulling

**please call me on 07939 563 282**

**Qualified Foot Health Professional**

**Bridget Clifford MCFHP MAFHP**  
Foot Care in the comfort of your own home.

**Tel: 01787 211345**  
If unavailable leave a message and your call will be returned.

**C D Lawson**  
Building & Hard Landscaping  
01787 211429 mobile: 07730885019

- All Building work •
- Maintenance •
- Alterations • Extensions •
- Driveways • Drainage •
- Patios • Fences etc. •

Professional and Reliable service at competitive rates

13 Boxford Lane, Boxford, CO10 5JU  
email: [lawsondian@btinternet.com](mailto:lawsondian@btinternet.com)

**-PJH-**  
Property Maintenance

Quality Painting and Decorating  
Interior & Exterior,  
Tiling and General Maintenance,  
Carpentry

[www.pjhpropertymaintenance.co.uk](http://www.pjhpropertymaintenance.co.uk)  
[pjhpropertymaintenance337@gmail.com](mailto:pjhpropertymaintenance337@gmail.com)

6 Hadleigh Road, Boxford, Sudbury CO10 5JH  
**TELEPHONE: 01787 212366**

**SJ Hurrell**  
Plumbing & Heating

Over 30 years of experience specialising in custom solutions for all of your plumbing & heating requirements

- Gas & Oil Central Heating
- Annual Boiler Servicing
- Bathroom Design & Installation
- Underfloor Heating
- Energy Efficient Systems

**07970 163084 • 01787249081**  
[scott@sjhurrell.co.uk](mailto:scott@sjhurrell.co.uk) • [www.sjhurrell.co.uk](http://www.sjhurrell.co.uk)



**Bed & Breakfast**  
**Newmans Hall Farm**  
[www.newmanshall.co.uk](http://www.newmanshall.co.uk)

- \* All rooms en-suite \*
- \* Ample off-road parking \*
- \* No smoking policy \*
- \* Heated indoor swimming pool \*
- \* Quiet rural setting \*
- \* Spacious grounds \*

Monks Eleigh Road  
Little Waldingfield  
Sudbury, Suffolk  
CO10 0SY

Telephone: 01787 249111  
Charles mobile: 07850 210256  
Louise mobile: 07887 540432

email: [louise@newmanshall.co.uk](mailto:louise@newmanshall.co.uk)

**Ken Grime & Son Ltd**  
Electrical Contractors

Fully Qualified and part P Registered  
All types of electrical works undertaken  
No job too small • Very competitive prices

Office Tel: **01787 373 558**  
Ken Mobile: **07702 358 802**  
109 Bures Road • Great Comard • Suffolk • CO10 0JE

# Services Directory

## Darren Howe - Qualified Carpenter & Joiner

*All Aspects of Carpentry Undertaken*

- Handmade Kitchens & Fitted Wardrobes
- Fitted Kitchens
- Doors Made and Hung
- Floors & Laminates
- Balustrading, Decking and much more

Call me for a free No Obligation Quotation  
on 07795 345466 or email me at  
howies@hotmail.co.uk



## N D Rose Int/Ext Decorating

- Gutters Cleaned/Repaired/Replaced
- Wall/Floor Tiling
- General Building Maintenance

Telephone 01787 211042  
Mobile 07518 040 465  
3 Fen Street, Boxford, CO10 5HL



## alchemy aesthetics & well-being

for the mind, body & soul

Harley Street Trained Health Care Professionals

2 Hall Cottages, School Rd, Borley CO10 7AD  
t: 07871 528 293 e: alchemywb@gmail.com  
www.alchemyaesthetic.co.uk



Your Local Insurance Broker Is  
Here For You

## Coversure Sudbury

CALL US: 01787 374 857

VISIT US: coversure.co.uk/sudbury

We can offer you insurance cover  
for  
Business, Property, Home & Motor

For business. For family. For you.

## WELDING & FABRICATION



Bespoke Gates, Railings, Balustrade  
For design, repair or advice Call Craig 07775 745213  
www.awardfabrications.co.uk

## Antique Renovations



Expert restorers of fine antiques & interior woodwork

UNIT 1, BRIDGE FARM  
LAVENHAM ROAD, BRENT ELEIGH, CO10 9PB  
Tel: 01787 248 511



LOUISE'S  
Mobile Hairdressing

I am an experienced,  
professionally trained hairdresser  
& will visit you in the comfort  
of your own home.

Full colours, highlights, cut & blow-dry  
Prom & wedding packages available  
Ladies, gents & children

Please call Louise to book an appointment

**07970 704 823**

## FIREWOOD

DRY SEASONED LOGS  
VARIOUS LOAD SIZES AVAILABLE



## KILN DRIED LOG NETS

Delivery available on minimum of 6 nets

Contact Carol Abbot  
**01473 829 130 or**  
**mobile 07768 795 981**

## Damp, Mould, Condensation?

We are a specialist damp company using  
cutting-edge technology with a  
workforce of over 20 years experience.



**FREEPHONE**  
**0800 978 8313**  
www.mydamp.co.uk



A private gym for time-strapped  
people eager to build and  
maintain a strong, confident and  
functional physique.

Training is individually tailored to  
your needs using safe and proven  
time-efficient methods with  
advanced variable resistance  
machines.

Tried and tested training principles  
combined with 1:1 focused  
coaching will challenge and help  
you reach your goals.

W: [eightfivegym.com](http://eightfivegym.com)

E: [info@eightfivegym.com](mailto:info@eightfivegym.com)

## BUSINESS OWNER?

WHY AREN'T YOU IN THE  
BOX RIVER NEWS DIRECTORY?

The Box River News is the  
go-to reference for thousands  
of people across South Suffolk for  
trade services.

**Ensure you contact us to  
boost your business  
for a ridiculously low cost.**

Now with free online  
business directory listing:  
turbo-charge your SEO rankings!

**01787 210946**

[editor@boxrivernews.com](mailto:editor@boxrivernews.com)

## M.D.MILLS

(BUILDING CONTRACTORS) LTD

All types of building work undertaken including:

Extensions, Renovations  
Insurance Repair Works,  
Plumbing & Heating, Electrics,  
Roofing, Tiling, Decoration, etc

For a free no obligation estimate  
please call:

**01787 373085**

[www.mdsmills.co.uk](http://www.mdsmills.co.uk)



WHITWELL  
SERVICES

For all your Home Heating & Plumbing Needs

Established in 1979  
Oil Boiler Servicing, Repair & Installation,  
Oil Tank Fitting,  
Renewable Energy Installation  
Gas Safety Registered.

We offer a unique  
Design & Installation service for  
Bathrooms, Kitchens, Renovations and  
New Build Projects.

To Contact us:  
Tel: 01787 210277

Email: [enquiries@whitwellservices.co.uk](mailto:enquiries@whitwellservices.co.uk)  
Web: [www.whitwellservices.co.uk](http://www.whitwellservices.co.uk)



# Services Directory

## NEWTONS FARM INDOOR TENNIS COURT

NO MEMBERSHIP FEES  
PAY AND PLAY  
OPEN 7AM TO 10PM  
IN WISSINGTON, 1 MILE FROM NAYLAND  
BOOK ONLINE: [www.indoortenniscourt.co.uk](http://www.indoortenniscourt.co.uk)

## original hand-made prints



artist : printmaker  
Boxford : Suffolk  
**01787 211501**

browse my website gallery — studio open by appointment  
[annetownshendart.weebly.com](http://annetownshendart.weebly.com)

## Nº 18 HONEY

### LOCAL SUFFOLK HONEY

100% pure honey, straight from the hive to the jar.  
Made by our happy bees from  
local wildflowers right here in Boxford.  
Available to buy online or direct from the  
driveway, cash and card payments accepted.

BBKA-registered swarm collectors

18 STONE ST. BOXFORD CO10 5NR  
**01787 210 946 / 07919 902 437**

[www.numbereighteensuffolk.com](http://www.numbereighteensuffolk.com)  
[buzz@numbereighteensuffolk.com](mailto:buzz@numbereighteensuffolk.com)



### FORMERLY 'NAILS BY GRACE'

I'm Grace Crimmin, a fully qualified  
Beauty Therapist with over 10 years  
experience in salons and spas.  
I offer a wide variety of treatments from  
my treatment room in Newton, including  
Body Massages, Facials, Manicures,  
Pedicures, Waxing and more!  
I look forward to hearing from you.

[www.beauty-bygrace.co.uk](http://www.beauty-bygrace.co.uk)

**07484 648932**

## CARPENTRY & JOINERY

*Purpose made doors, windows,  
conservatories, fitted kitchens,  
bedroom furniture, etc.*

*No job too small M Hearnden*  
Tel: **01787 248 285 / 07850 196 891**

## BUSINESS OWNER?

### WHY AREN'T YOU IN THE BOX RIVER NEWS DIRECTORY?

The Box River News is the  
go-to reference for thousands  
of people across South Suffolk for  
trade services.

**Ensure you contact us to  
boost your business  
for a ridiculously low cost.**

Now with free online  
business directory listing:  
turbo-charge your SEO rankings!

**01787 210946**  
[editor@boxriversnews.com](mailto:editor@boxriversnews.com)

## HOWARD WATTS Automotive



Sales and Service at  
Riddelsdell Bros Ltd (Est 1900)  
ELLIS STREET, BOXFORD, CO10 5HH

**01787 210318**  
**07836 353537**

[www.howardwatts.co.uk](http://www.howardwatts.co.uk) info @howardwatts.co.uk

## Andy Morgan Painter & Decorator S.E.P. Painters

Tel: **01787 375824 • Mobile 07748 800701**  
[andy@seppainters.co.uk](mailto:andy@seppainters.co.uk)  
For all your interior and exterior decorating ...  
...from New Build to Period Properties  
Your satisfaction is my speciality!  
Detailed information on my website:  
[www.seppainters.co.uk](http://www.seppainters.co.uk)

## Seasoned Firewood & Woodchip For Sale By the load **01787 319200**



We carry out all aspects  
of tree works  
**SUFFOLK TREE SERVICES**  
[www.suffolktreeservices.co.uk](http://www.suffolktreeservices.co.uk)

## Sudbury Physiotherapy Centre & Complementary Health

- Musculoskeletal
- Neuro-Physiotherapy
- Sports Massage
- Chiropody
- Podiatry
- Pilates
- Shiatsu
- Clinical Hypnosis
- Nutritional Therapy

Appointments available Monday - Saturday

Tel: **01787 378178**  
Email: [sudburyphysio@hotmail.co.uk](mailto:sudburyphysio@hotmail.co.uk)  
[www.sudburyphysio.co.uk](http://www.sudburyphysio.co.uk)  
8 Cornard Road Sudbury CO10 2XA

## Tree Surgeon



Blake Tree Care

### Providing excellence in:

- Tree Felling
- Canopy Reduction
- Hedge Cutting
- Garden Clearance
- Tree Shaping and Pruning
- Stump Grinding
- Pollarding
- Emergency Tree Work

Free Consultation for Small and Large Jobs

Public Liability Insurance

M: **07515 288736**  
O: **01787 228341**  
[info@blaketreecare.co.uk](mailto:info@blaketreecare.co.uk)  
[www.blaketreecare.co.uk](http://www.blaketreecare.co.uk)



"A very competitive price and a VERY tidy job" ★★★★★

## AERIAL VIEW

- TV, FM & DAB aerials - Freeview, Freesat & Sky
- Installations, Repairs & Extra points
- TV's Set-Up & Installed
- TV wall mounting
- Wi-Fi & Telephone extensions

Please call for all other services  
**01787 311057**  
Or visit [www.aerial-installers.co.uk](http://www.aerial-installers.co.uk)

## Suffolk Medical & Beauty Clinic

All Beauty Therapy Treatments  
Laser Permanent Hair Removal  
Anti - Wrinkle Injections  
Thread vein treatment  
Skin Rejuvenation  
Dermal Fillers  
Mole and Skin Checks  
Dermaroller/Pen  
Medical Microdermabrasion



[www.suffolkmedicalclinic.co.uk](http://www.suffolkmedicalclinic.co.uk)  
6 Broad Street. Boxford  
**01787 211000**

## H Byham & Son Ltd Ballingdon Dairy, Sudbury

Deliveries of Dairy Produce and  
Goods to Boxford and  
Surrounding Villages  
**Tel: 01787 372526**

# Services Directory



**Cass White Upholstery**  
Traditional & Modern

[www.casswhiteupholstery.com](http://www.casswhiteupholstery.com)

07759 924 209  
[casswhite@live.com](mailto:casswhite@live.com)

**CARPETS - VINYL - WOOD**  
**LIONEL HATCH FLOORS**

**Your local professional, personal,  
competitively priced flooring service**

**Call Lionel Today**

**T: 01787 374163 M: 07766 026 875**  
**EMAIL: [lionelhatchfloors@gmail.com](mailto:lionelhatchfloors@gmail.com)**



**SO LANDSCAPES**

We are Sudbury Suffolk based hard landscaping company that excels in all aspects of landscaping.

Our 5\* reviewed company offers bespoke high quality reliable services catering for all budgets. Enhance your property's value and enjoy the beautiful weather with family & friends - or even just for some much needed self care.

Take action now by giving us a call to book your free quotation:

**Phone: 01787 377846 or 07590 111 025**  
**Email: [Ashley@SoLandscapes.co.uk](mailto:Ashley@SoLandscapes.co.uk)**



**JPS Timber**

**Suppliers of:**

- New and Reclaimed Sleepers
- Reclaimed Scaffold Boards
- Carcassing Timber
- Decking
- Post and Rail Fencing
- Oak Barrels and Planters and more....

**07970 559 251**

[mail@jpstimmer.co.uk](mailto:mail@jpstimmer.co.uk)  
[www.jpstimmer.co.uk](http://www.jpstimmer.co.uk)

**Hadleigh Hairloom**  
78 - 80 High Street, Hadleigh  
01473 822191

**Walk-in Family Salon**

Catering to the entire family's hairdressing needs  
\* Easy Access \* Family Friendly \* Free Wi-Fi \*

Comfortable Waiting Area with Toys and TV.  
Monday Wednesday & Friday: 9 - 5.30  
Tuesday 9 - 7.00 \* Thursday 9 - 8.00 \*  
Saturday 8.30 - 4.00

**PEP SERVICES**

- Carpentry -
- Tiling -
- Painting & Decorating -
- Home Maintenance -



Friendly & efficient local service  
No job too small

**Call 07792 931446 for a quote**

**Amanda Hollingworth**  
**Counsellor**

**Helping people overcome their emotional,  
psychological and relationship problems  
for over 30 years**

COSRT Accredited Psychosexual Therapist  
COSRT Accredited Clinical Supervisor  
UKCP & BUPA Registered Psychotherapist

**contact: 01473 824663 or  
[ac.hollingworth@gmail.com](mailto:ac.hollingworth@gmail.com)**

**David Folkard**  
**BLOCKBUSTERS**  
**Drain Clearance**  
Sinks, Toilets, Drains  
Sewers etc.

**Hadleigh 01473 827426**



**Boxstore™**  
Archive and general storage

**The Local  
Self Storage  
Company**

**For all domestic and  
business needs**

See website for details  
**[www.boxstore.co.uk](http://www.boxstore.co.uk)**  
or phone 01787 210350

**BUSINESS OWNER?**  
**WHY AREN'T YOU IN THE  
BOX RIVER NEWS DIRECTORY?**

The Box River News is the go-to reference for thousands of people across South Suffolk for trade services.

**Ensure you contact us to  
boost your business  
for a ridiculously low cost.**

Now with free online  
business directory listing:  
turbo-charge your SEO rankings!

**01787 210946**  
[editor@boxrivernews.com](mailto:editor@boxrivernews.com)

**GARDEN WORK**  
**TREES & HEDGES**

Call for a quote  
G.J. & C.A. Abbott

**01473 829130 or  
mobile 07768 795981**

**P.D. Garner**  
**Plastering Services**

**Telephone: 01206 262207**  
**Mobile: 07976 246713**

13 Elmtree Lane, Leavenheath, Colchester CO6 4UL

**Colne Valley Windows**  
**Your local double glazing company**

*Windows • Doors • Conservatories  
Bi-Folding Doors • Soffits • Facias and  
Guttering • uPVC and Aluminium • Shop  
Fronts • Manual and Automatic Entrances  
and much more!!*

Transferable 10 Year Insurance  
Backed Guarantee  
Over 30 Years Experience  
Free Quotation  
Local Family Run Business



**To arrange a free quotation  
please call us on 01787 827382**

Website: [www.colnevalleywindows.co.uk](http://www.colnevalleywindows.co.uk)  
Email: [info@colnevalleywindows.co.uk](mailto:info@colnevalleywindows.co.uk)  
Certified Company 36650

**LAWNS FIELDS AND GARDENS**

Established 1991

All types of Grasscutting undertaken •

- Commercial and Domestic •
- Contract or otherwise •
- Grounds Maintenance •
- Hedges • Trees • Fencing • Patios •
- Drives • Pergolas •

**FOR A FREE QUOTE RING MARTIN ON  
07932 477152**

**A Tennent Electrical**

Quality Electrics for Domestic, Commercial  
and Industrial properties

Small jobs to complete re-wires

For a free estimate call Adrian on:  
**01787 211576 Mobile: 07968 856 765**  
e.mail: [adrian.tennent@btinternet.com](mailto:adrian.tennent@btinternet.com)  
1 Church Street, Boxford, Sudbury



**MINI WASTE LIMITED**

**2, 3, 4, 6, 8, 10 & 12 YARD SKIPS FOR HIRE**  
**16, 20 & 40 YARD RO/RO FOR HIRE**

Tel: 01787 378811  
e mail: [info@miniwaste.co.uk](mailto:info@miniwaste.co.uk)  
Website: [www.miniwaste.co.uk](http://www.miniwaste.co.uk)





## *The Red House*

— RESIDENTIAL HOME —

A fine Georgian building set within a beautiful garden, offering a sanctuary of peace and security within the centre of Sudbury, offering all the necessary care and attention for those who wish to spend their retirement and later years in a warm and caring atmosphere.

### *Contact Us*

Meadow Lane, Sudbury, Suffolk, CO10 2TD

Telephone: 01787 372948

[www.redhousesudbury.co.uk](http://www.redhousesudbury.co.uk)

**SN** Stoke by Nayland  
RESORT

# SANTA SUNDAY

**SUNDAY 3RD, 10TH & 17TH DECEMBER**

Join us for a special two-course Sunday lunch this December. Enjoy festive entertainment and a special visit from Santa, with a gift for every child!

£12.00 PER CHILD (2-6YRS), £17.00 PER CHILD (7-12YRS) & £30.00 PER ADULT



To book your tickets, please call our Events Team on 01206 262836

DAVID  
BURR

# Sales, Lettings & Managed Holiday Lets



**Bury St Edmunds**

01284 725525

[bury@davidburr.co.uk](mailto:bury@davidburr.co.uk)

**Holiday Lets**

01787 888698

[support@davidburrholidaylets.co.uk](mailto:support@davidburrholidaylets.co.uk)

**Long Melford**

01787 883144

[melford@davidburr.co.uk](mailto:melford@davidburr.co.uk)

**Castle Hedingham**

01787 463404

[hedingham@davidburr.co.uk](mailto:hedingham@davidburr.co.uk)

**Leavenheath**

01206 263007

[leavenheath@davidburr.co.uk](mailto:leavenheath@davidburr.co.uk)

**Newmarket**

01638 669035

[newmarket@davidburr.co.uk](mailto:newmarket@davidburr.co.uk)

**Clare**

01787 277811

[clare@davidburr.co.uk](mailto:clare@davidburr.co.uk)

**London SW1**

0207 839 0888

[london@davidburr.co.uk](mailto:london@davidburr.co.uk)

**Woolpit**

01359 245245

[woolpit@davidburr.co.uk](mailto:woolpit@davidburr.co.uk)

[davidburr.co.uk](http://davidburr.co.uk)